

# Facade options and features



**Manhattan Facade** Roof Type Colorbond Total m<sup>2</sup>/Sq 256.96/27.7



**Grande Facade** Roof Type Colorbond Total m<sup>2</sup>/Sq 263.63/28.4



**Hamptons Facade** Roof Type Tiles Total m<sup>2</sup>/Sq 261.87/28.2



**Executive Facade** Roof Type Tiles Total m<sup>2</sup>/Sq 256.96/27.7



**Retro Facade** Roof Type Colorbond Total m<sup>2</sup>/Sq 262.32/28.2



**Metro Facade** Roof Type Tiles Total m<sup>2</sup>/Sq 262.03/28.2



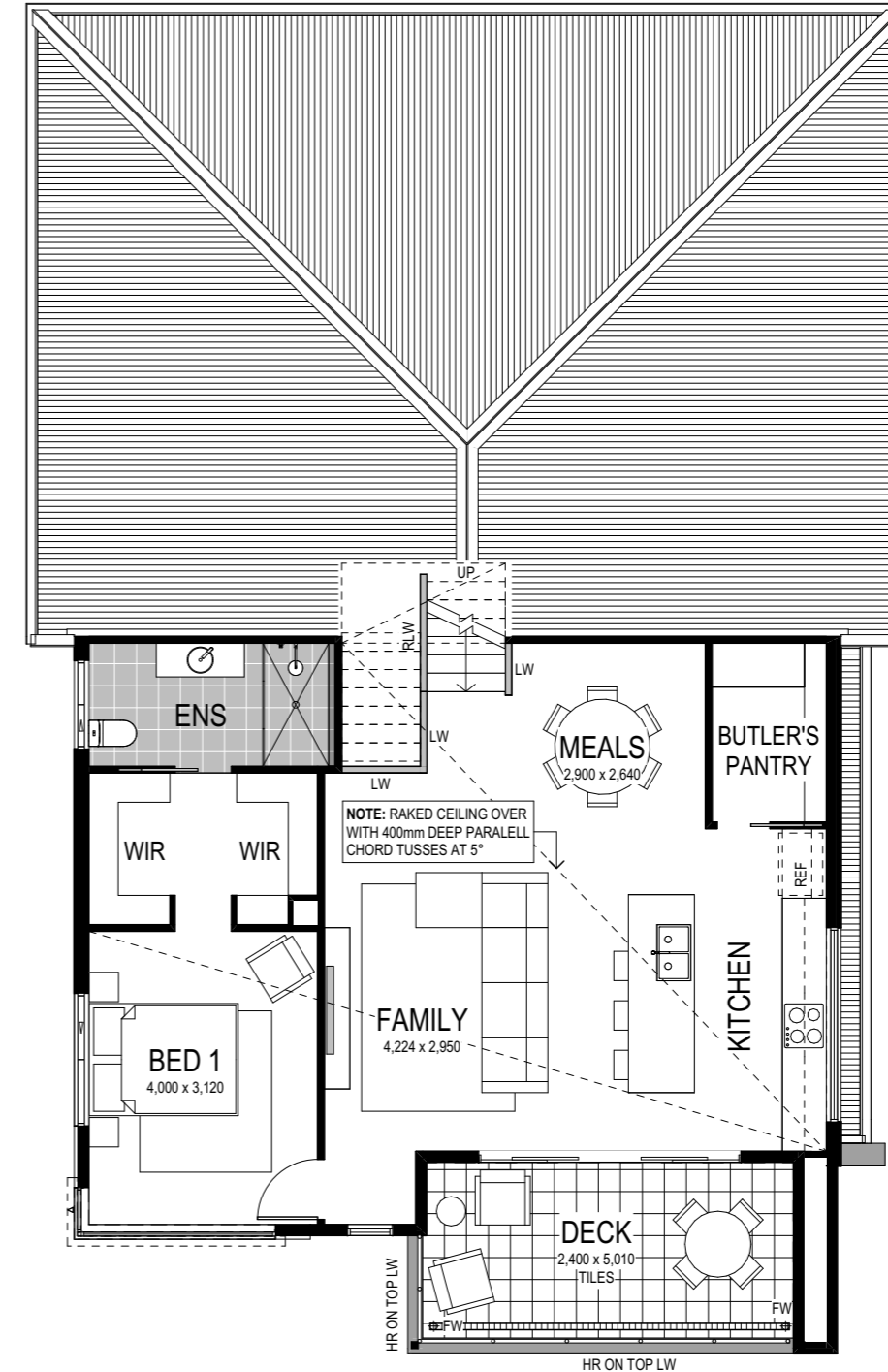
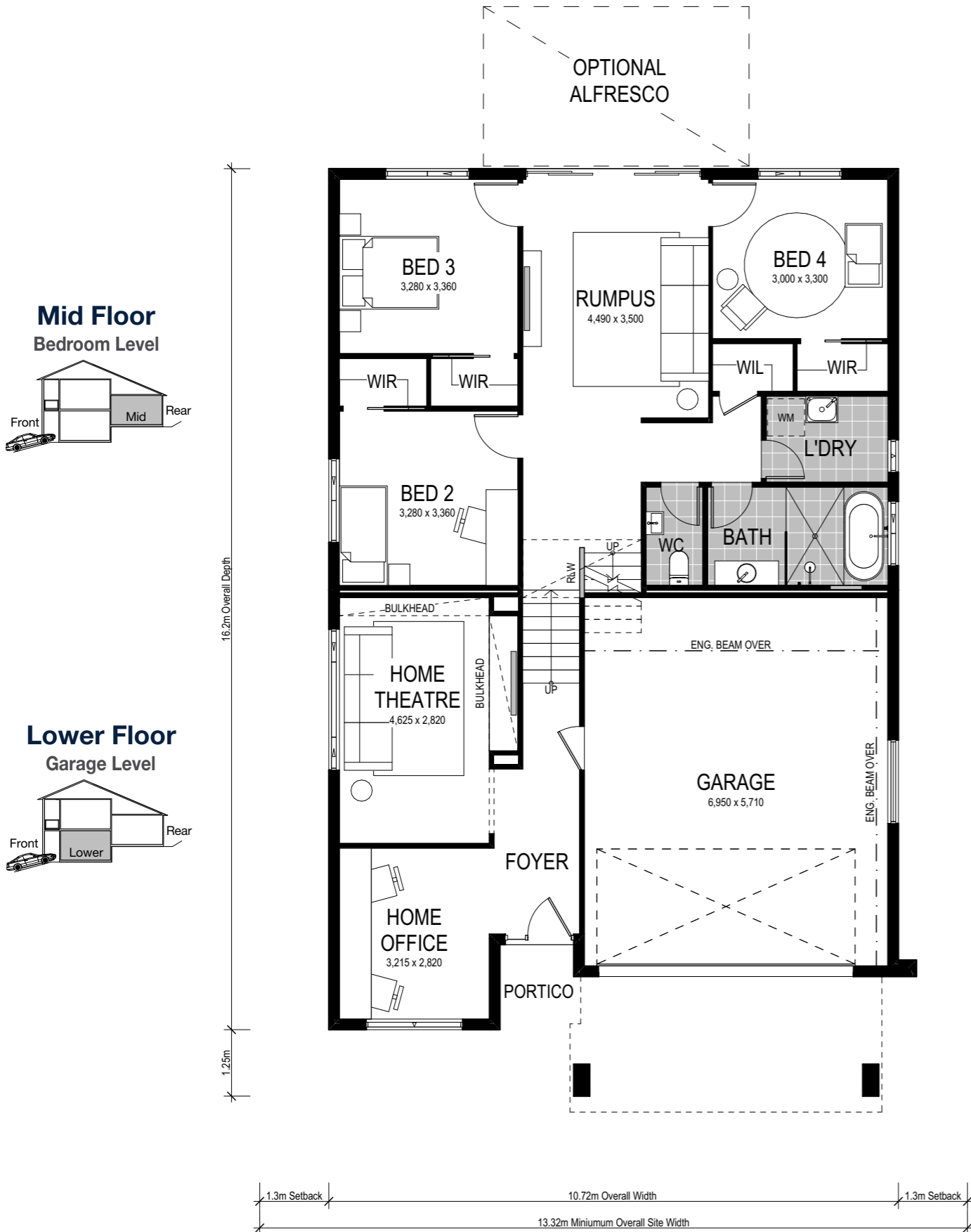
Note: Artist's impressions and pictures shown in this brochure may not be standard finishes – please refer to standard inclusions list for details. Images may depict homes from other design ranges and are used for illustrative purposes only.



*Important - please read - copyright ©*  
All brochures, sketches & plans, whether conceptual or architectural, that we have developed on your behalf remain the property of Montgomery Homes under copyright law & we retain & claim all rights to these plans. Despite popular belief, changing our plans by 50% or more does not avoid legal responsibility for a copyright breach.

# Riviera 2 264





Scale: 1:100. Floor plan depicts Manhattan facade.

# Riviera 2 264

- 4 Bed
- 2 Bath
- 2 Park

The Riviera 2 264 is an enchanting home split-level design crafted to suit an uphill sloping site. With a floorplan spreading across three levels, a spacious foyer on the lower level welcomes you to a private home office and home theatre — perfect for movie marathons. Ascending the stairs to the mid-level, find three bedrooms (each with a walk-in robe), the main bathroom, laundry and bonus rumpus room. The upper level ignites your entertainment haven — with an open-plan kitchen, Butler’s Pantry, meals and family zone. Completing the upper level is a spacious covered deck to the kitchen, and the luxurious master suite including dual walk-in robes and ensuite.

Our specially designed homes for sloping sites feature many benefits:

- ✓ Abundant natural light and air-flow
- ✓ Separate living areas on different levels
- ✓ Preserve natural drainage
- ✓ Enhance outlooks and views
- ✓ Unique and architectural looking design
- ✓ Less excavation
- ✓ A flatter driveway
- ✓ Designed to follow slope of land
- ✓ Maximise space