

# Facade options and features



**Hamptons Facade**

Roof Type: Tiles | Total m<sup>2</sup>/Sq: 233.42/25.1



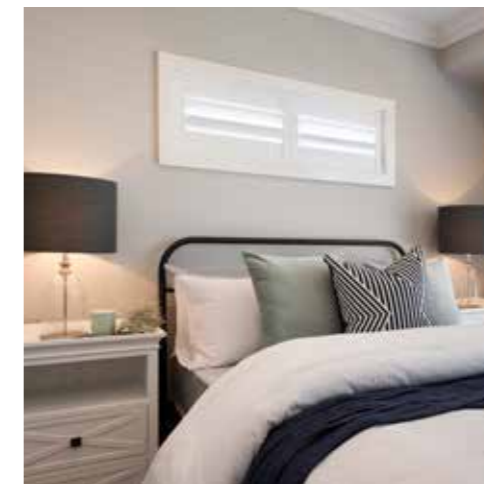
**Executive Facade**

Roof Type: Tiles | Total m<sup>2</sup>/Sq: 229.86/24.7



**Metro Facade**

Roof Type: Tiles | Total m<sup>2</sup>/Sq: 229.36/24.7



Note: Artist's impressions and pictures shown in this brochure may not be standard finishes – please refer to standard inclusions list for details. Images may depict homes from other design ranges and are used for illustrative purposes only.

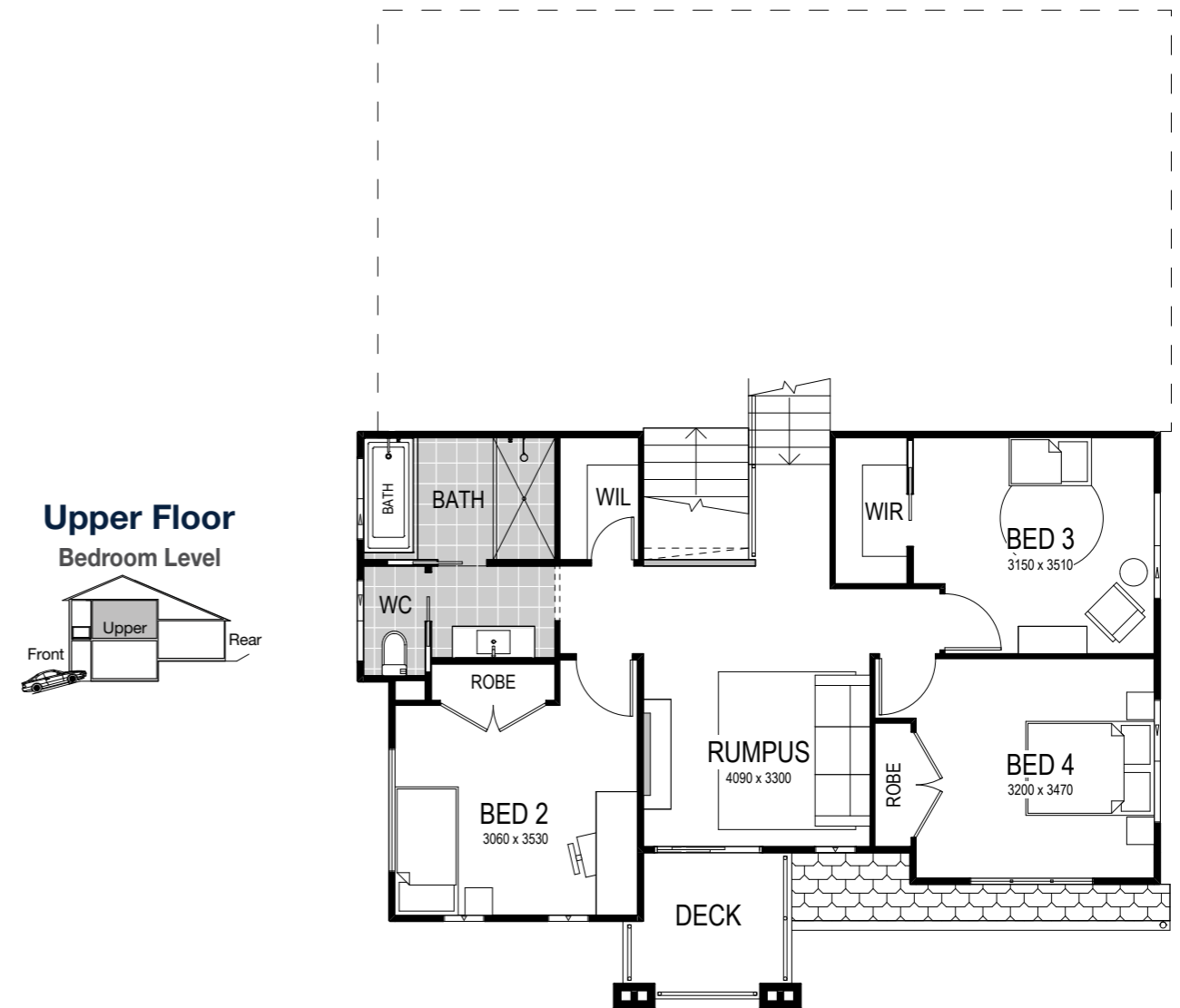
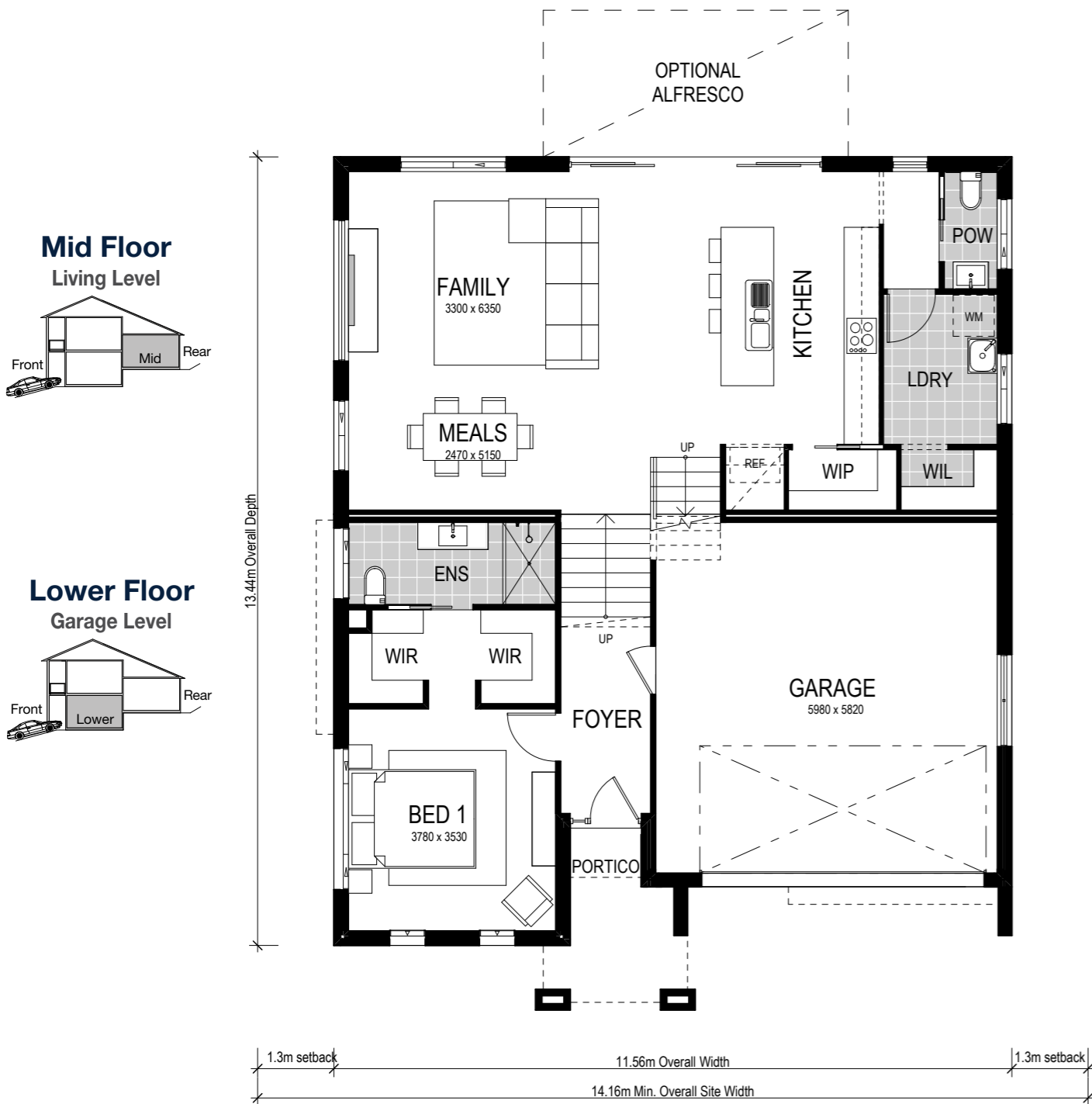
Important - please read - copyright ©

All brochures, sketches & plans, whether conceptual or architectural, that we have developed on your behalf remain the property of Montgomery Homes under copyright law & we retain & claim all rights to these plans. Despite popular belief, changing our plans by 50% or more does not avoid legal responsibility for a copyright breach.



# Riviera 1 230





Scale: 1:100. Floor plan depicts Hamptons facade.

# Riviera 1 230

- 4 Bed
- 2.5 Bath
- 2 Park

The Riviera 1 230 is one of our stand-out split-level designs and is the perfect home to complement an uphill sloping site. Entering through a stunning portico, be instantly greeted by the luxurious master bedroom, with a dual walk-in-robe and ensuite at the front of the house. Internal access to a spacious garage precedes ascension to the mid-level – the primary family space of the house. Featuring an open-plan kitchen and living space, additional powder room and alfresco area, this space truly is the entertainers’ dream. Secluded on the upper level are three spacious bedrooms, the main bathroom and an additional rumpus room which seamlessly flows to the outdoor deck area.

Our specially designed homes for sloping sites feature many benefits:

- ✓ Abundant natural light and air-flow
- ✓ Separate living areas on different levels
- ✓ Preserve natural drainage
- ✓ Enhance outlooks and views
- ✓ Unique and architectural looking design
- ✓ Less excavation
- ✓ A flatter driveway
- ✓ Designed to follow slope of land
- ✓ Maximise space
- ✓ Larger garage

A Riviera 1 262 is on display at:

**HomeWorld Warnervale**  
**18 Scarlett Street,**  
**Hamlyn Terrace**