



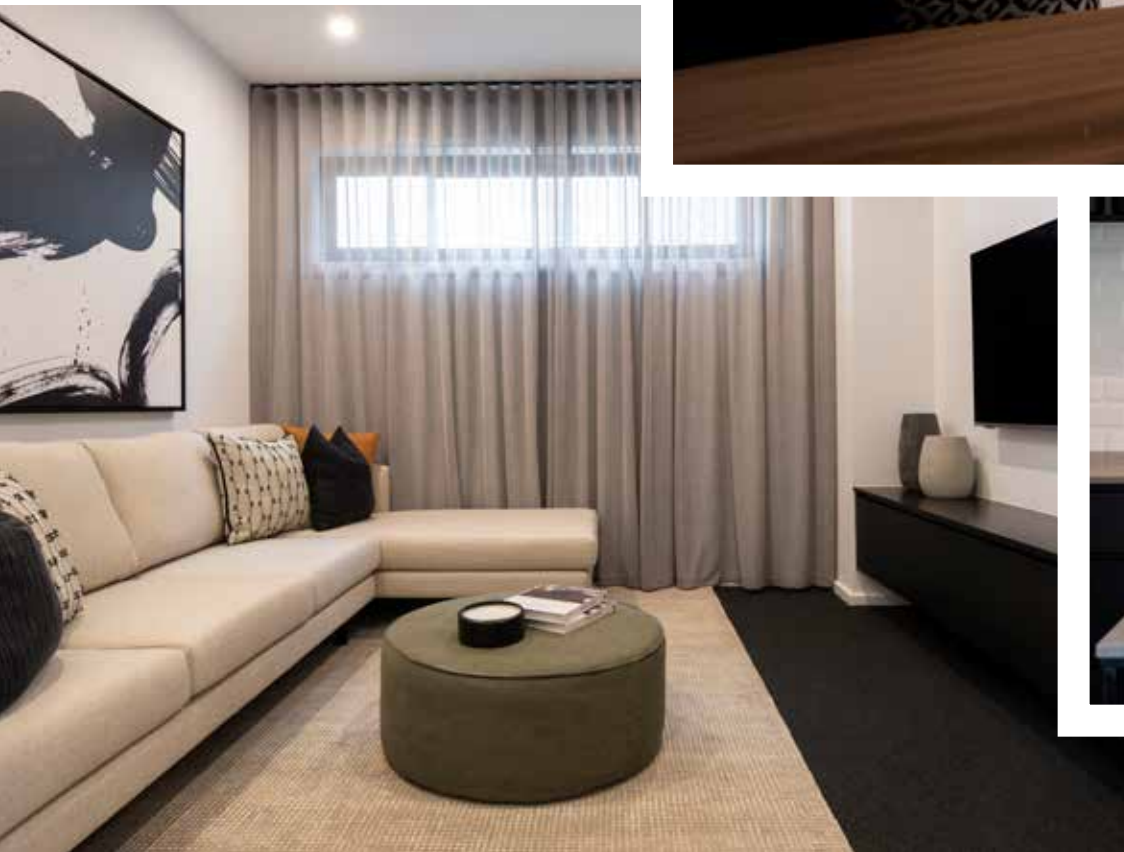
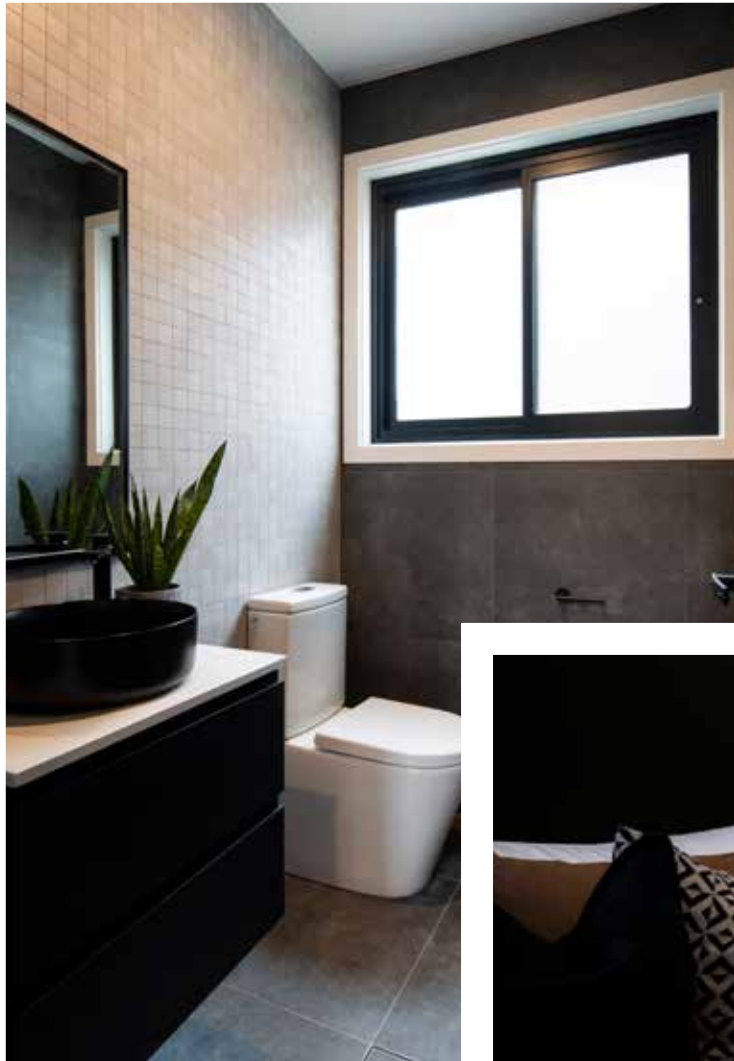
**MONTGOMERY**  
HOMES



*Corsica 2 199*

 **SLOPING**  
SITES





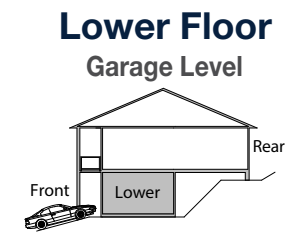
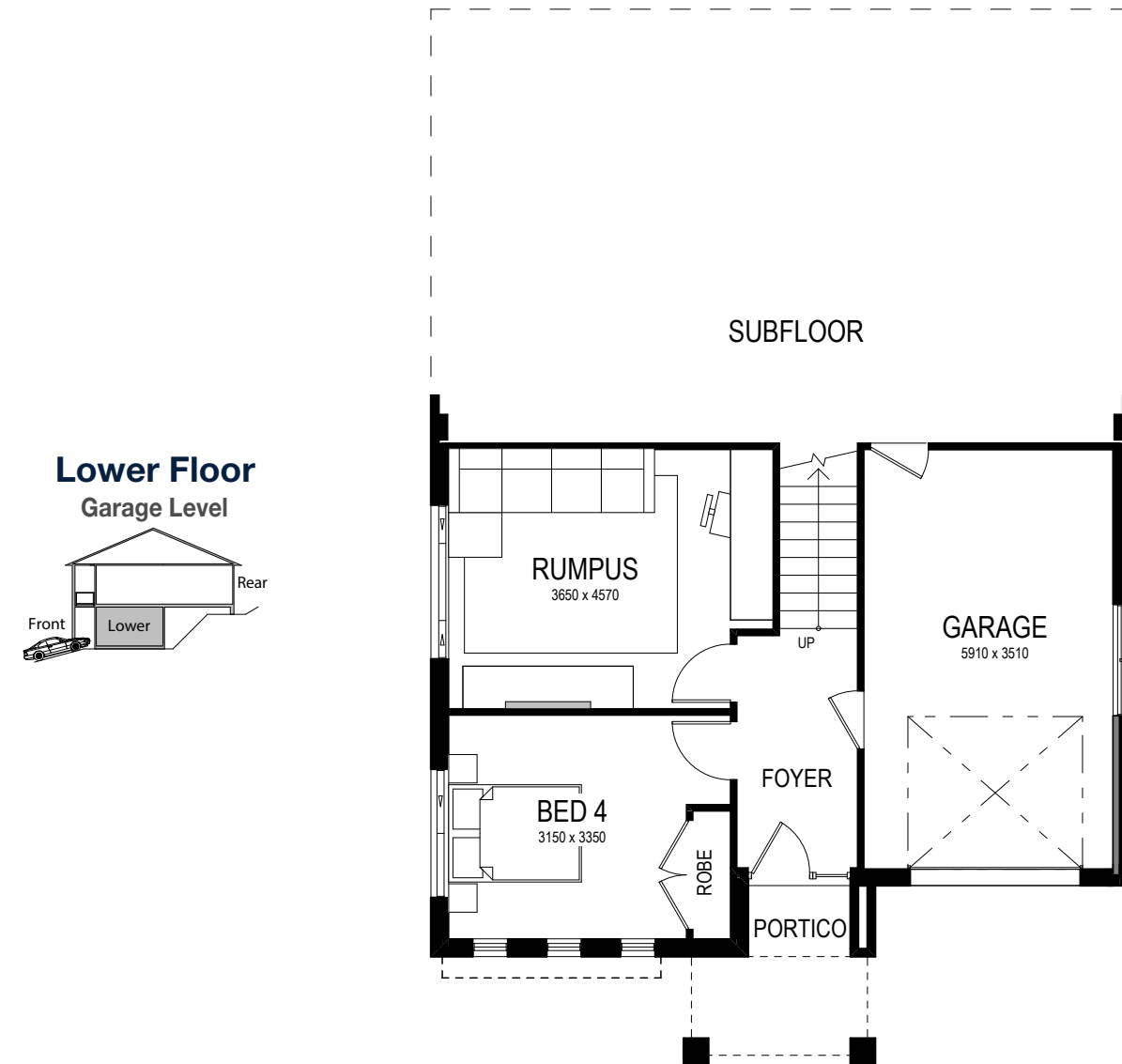
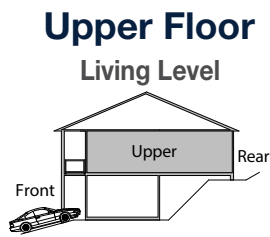
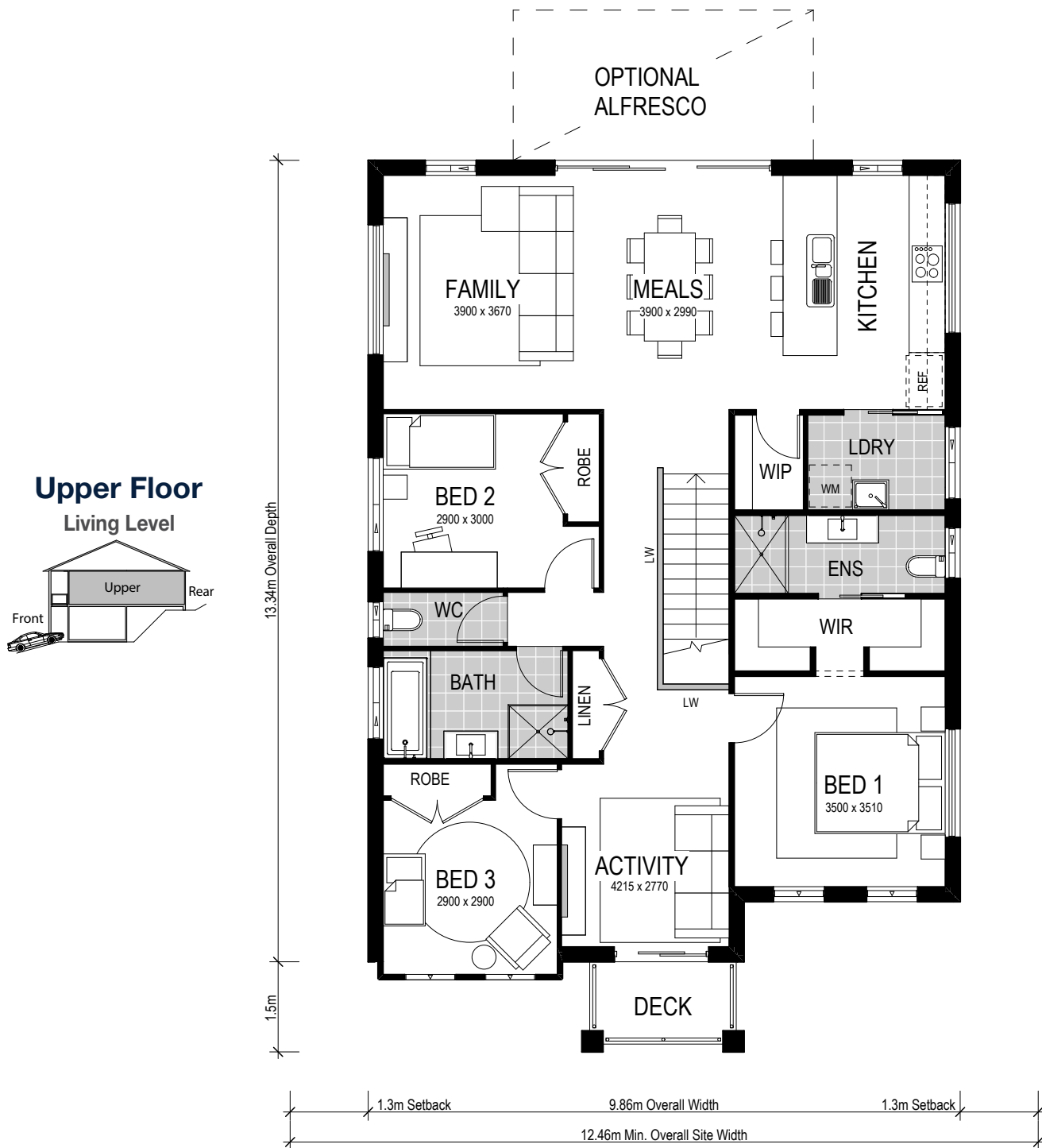
# Corsica 2 199

4 Bed 2 Bath 1 Park

Our sloping site specialist techniques have been applied to our Corsica range to develop a stylish home design that caresses the natural curve of your steep, uphill sloping site. The Corsica is a full split-level home design that provides multiple living areas which makes it perfect for big families who appreciate space to retreat as well as spend time together.

Our renowned split-level technique can result in flatter driveways, more manageable retaining walls, and will drastically improve your street appeal.





Scale: 1:100. Floor plan depicts Metro facade.

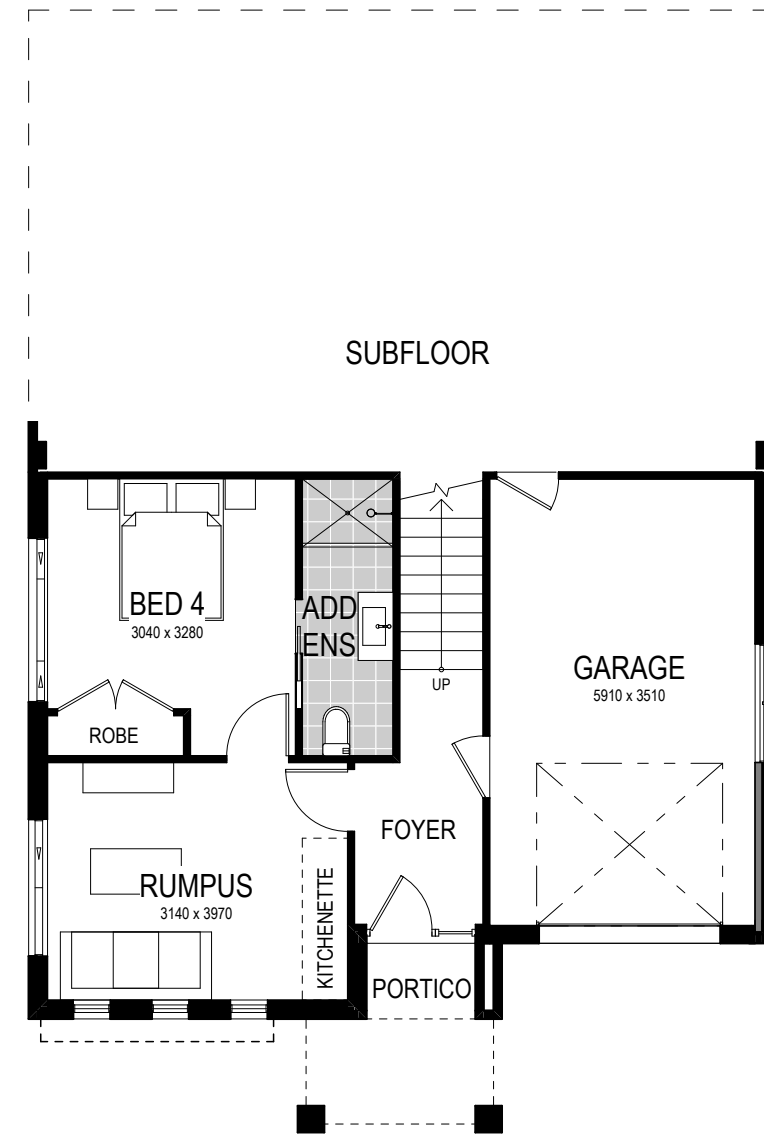
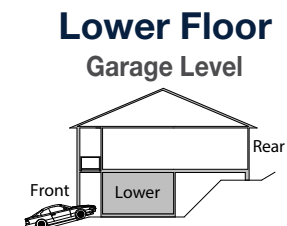
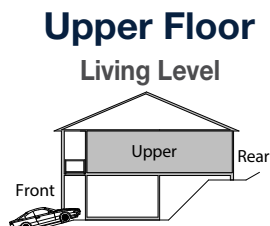
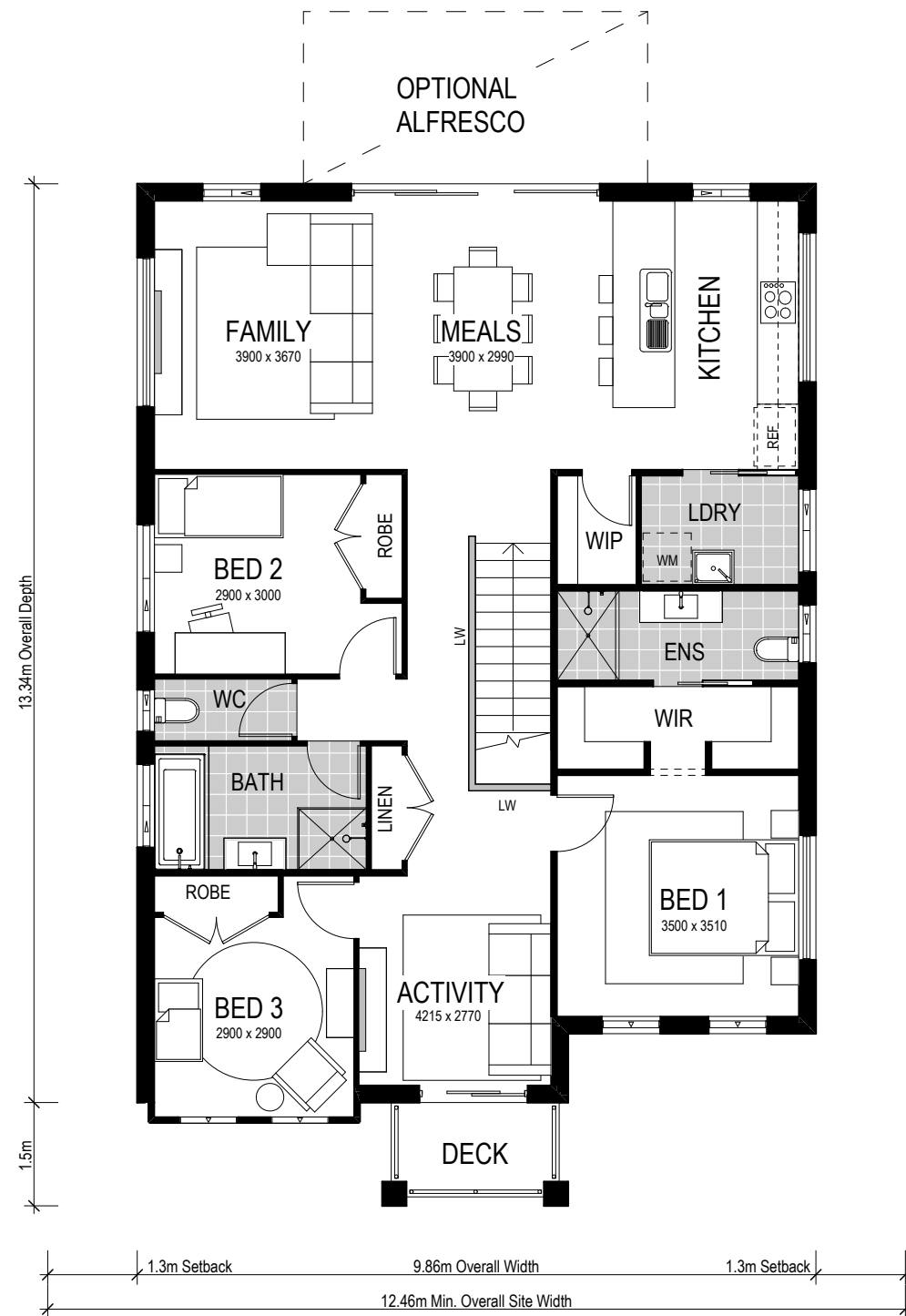
# Corsica 2 199

- 4 Bed
- 2 Bath
- 1 Park

Spread across two levels, make yourself at home in the Corsica 2 199. Benefiting from generous proportions throughout, this design includes four sizeable bedrooms and two bathrooms. With three separate living areas, the upper level embraces the family space by creating a contemporary and functional open plan kitchen, living area and alfresco – plus, a separate activity area which flows seamlessly to the front deck. The seclusion of the fourth bedroom and rumpus room to the lower level allows privacy for guests or a quiet space to rest and relax amidst the upper level flurry.

Our specially designed homes for sloping sites feature many benefits:

- ✓ Abundant natural light and air-flow
- ✓ Separate living areas on different levels
- ✓ Preserve natural drainage
- ✓ Enhance outlooks and views
- ✓ Unique and architectural looking design
- ✓ Less excavation
- ✓ A flatter driveway
- ✓ Designed to follow slope of land
- ✓ Maximise space



Scale: 1:100. Floor plan depicts Metro facade.

# Corsica 2 199

- 4 Bed
- 2 Bath
- 1 Park

This alternate floorplan features four spacious bedrooms and two bathrooms, with an additional ensuite and kitchenette to the lower level bedroom. This creates a self-contained, separate living space for regular guests. The upper level embraces the family space by creating a contemporary and functional open plan kitchen, living area and alfresco — plus, a separate activity area which flows seamlessly to the front deck.

Our specially designed homes for sloping sites feature many benefits:

- ✓ Abundant natural light and air-flow
- ✓ Separate living areas on different levels
- ✓ Preserve natural drainage
- ✓ Enhance outlooks and views
- ✓ Unique and architectural looking design
- ✓ Less excavation
- ✓ A flatter driveway
- ✓ Designed to follow slope of land
- ✓ Maximise space



# Facade options and features



**Metro Facade**

 **Roof Type**  
Tiles

 **Total m<sup>2</sup>/Sq**  
199.89/21.5

Note: Artist's impressions and pictures shown in this brochure may not be standard finishes – please refer to standard inclusions list for details. Images may depict homes from other design ranges and are used for illustrative purposes only.



*Important - please read - copyright ©*

All brochures, sketches & plans, whether conceptual or architectural, that we have developed on your behalf remain the property of Montgomery Homes under copyright law & we retain & claim all rights to these plans. Despite popular belief, changing our plans by 50% or more does not avoid legal responsibility for a copyright breach.