

# Facade options and features



**Manhattan Facade** **Roof Type** Colorbond **Total m<sup>2</sup>/Sq** 254.56/27.4



**Executive Facade** **Roof Type** Colorbond/Tiles **Total m<sup>2</sup>/Sq** 249.18/26.8



**Hamptons Facade** **Roof Type** Tiles **Total m<sup>2</sup>/Sq** 250.51/26.9



**Metro Facade** **Roof Type** Colorbond/Tiles **Total m<sup>2</sup>/Sq** 245.52/26.4

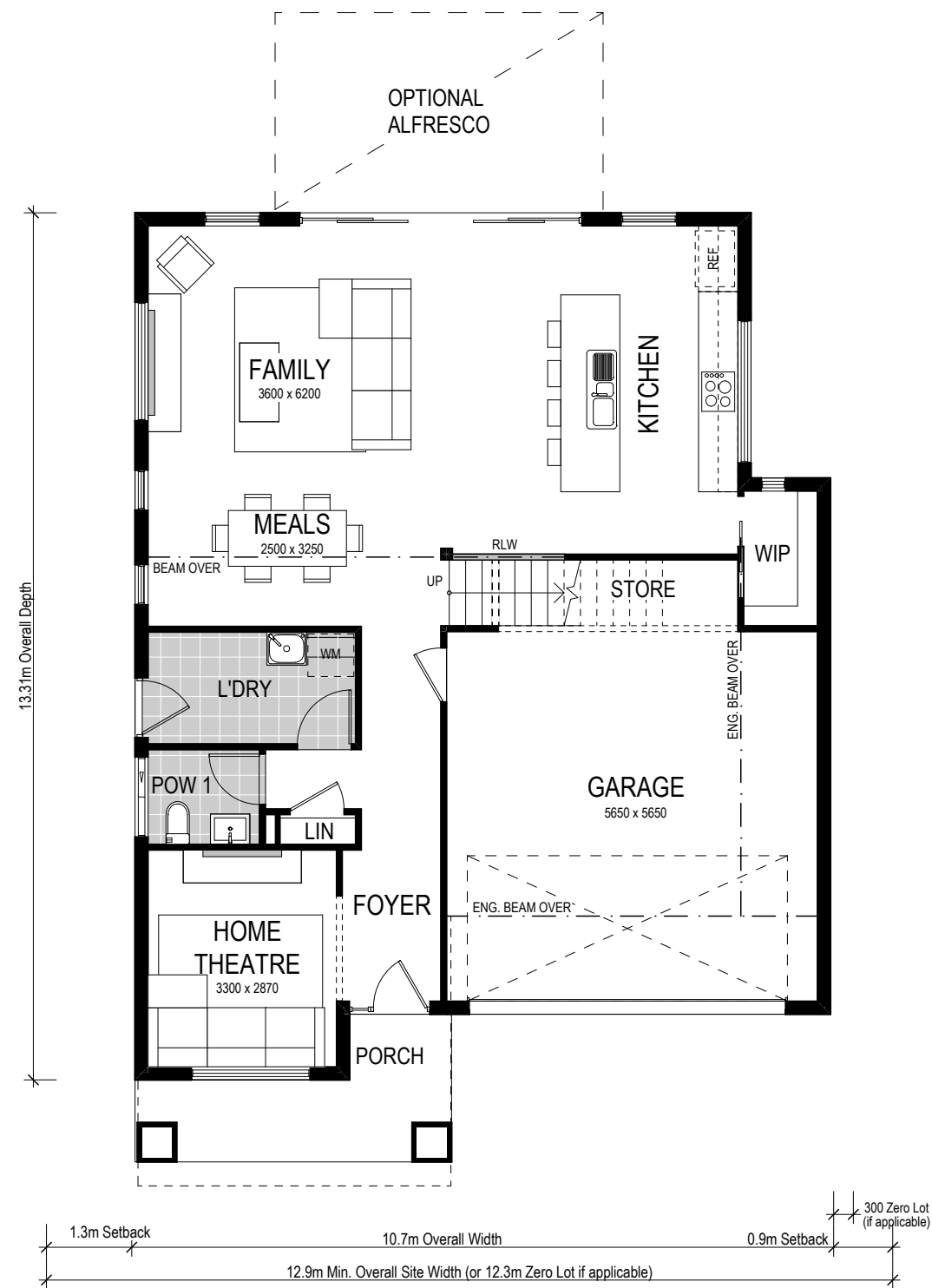
Note: Artist's impressions and pictures shown in this brochure may not be standard finishes – please refer to standard inclusions list for details. Images may depict homes from other design ranges and are used for illustrative purposes only.



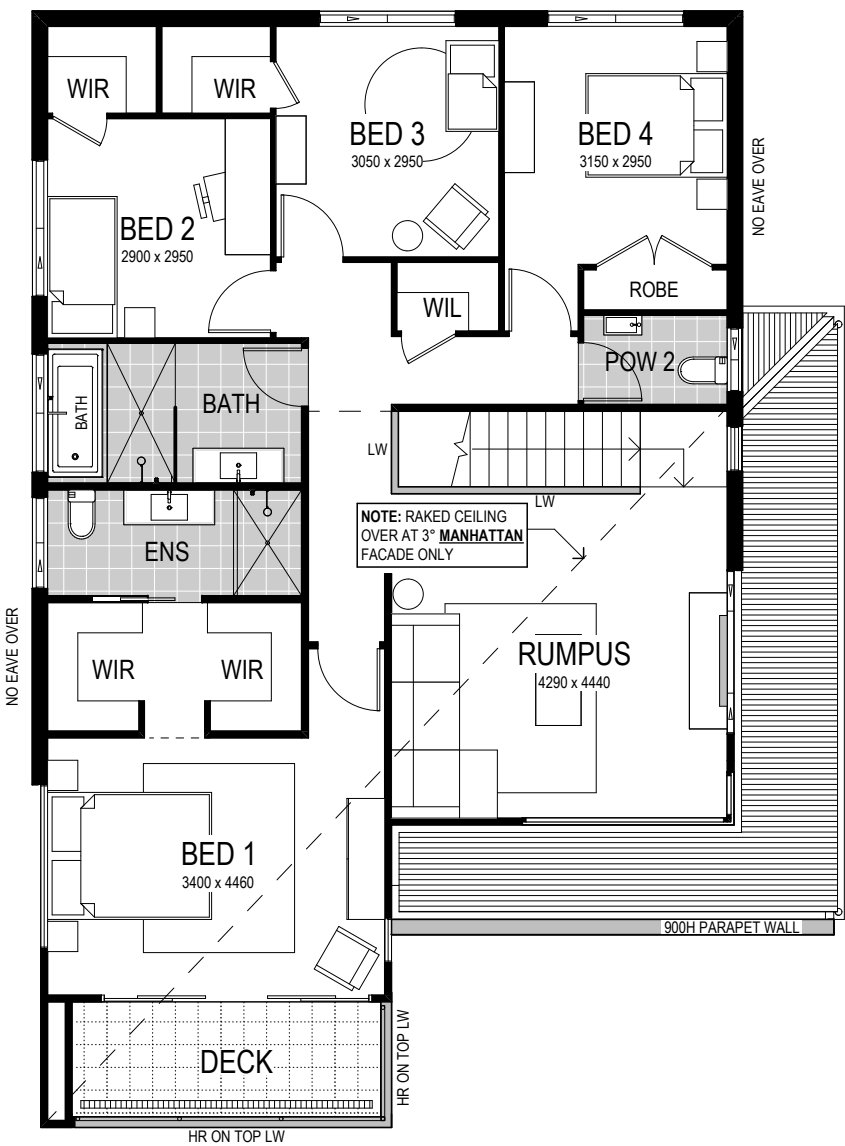
Cayman 255



Lower Floor



Upper Floor



Scale: 1:100. Floor plan depicts Manhattan facade.

Cayman 255

4 Bed  
2.5 Bath  
2 Park

The Cayman is a cutting edge, brand new design to our range of two storey homes. This new design has been cleverly designed to suit narrow lots, yet the spacious layout boasts three different living areas, four bedrooms and a contemporary Butler's pantry, making it perfect for families who appreciate space to retreat as well as spend time together.

This home comes with many great features:

- ✓ Variety of living areas
- ✓ Multiple facade options
- ✓ Easy to unfold onto alfresco area
- ✓ Walk-in pantry
- ✓ Home theatre
- ✓ Rumpus room
- ✓ Walk-in linen
- ✓ Under stair storage

A Cayman 287 is on display at:

**HomeWorld Box Hill**  
19 Gittel Street  
Box Hill, Sydney

**New Lambton**  
122 Bridges Road  
New Lambton