



Byron 262





Byron 262

4 Bed 2.5 Bath 1 Park

The Byron suite of double-storey home designs is both sophisticated and practical.

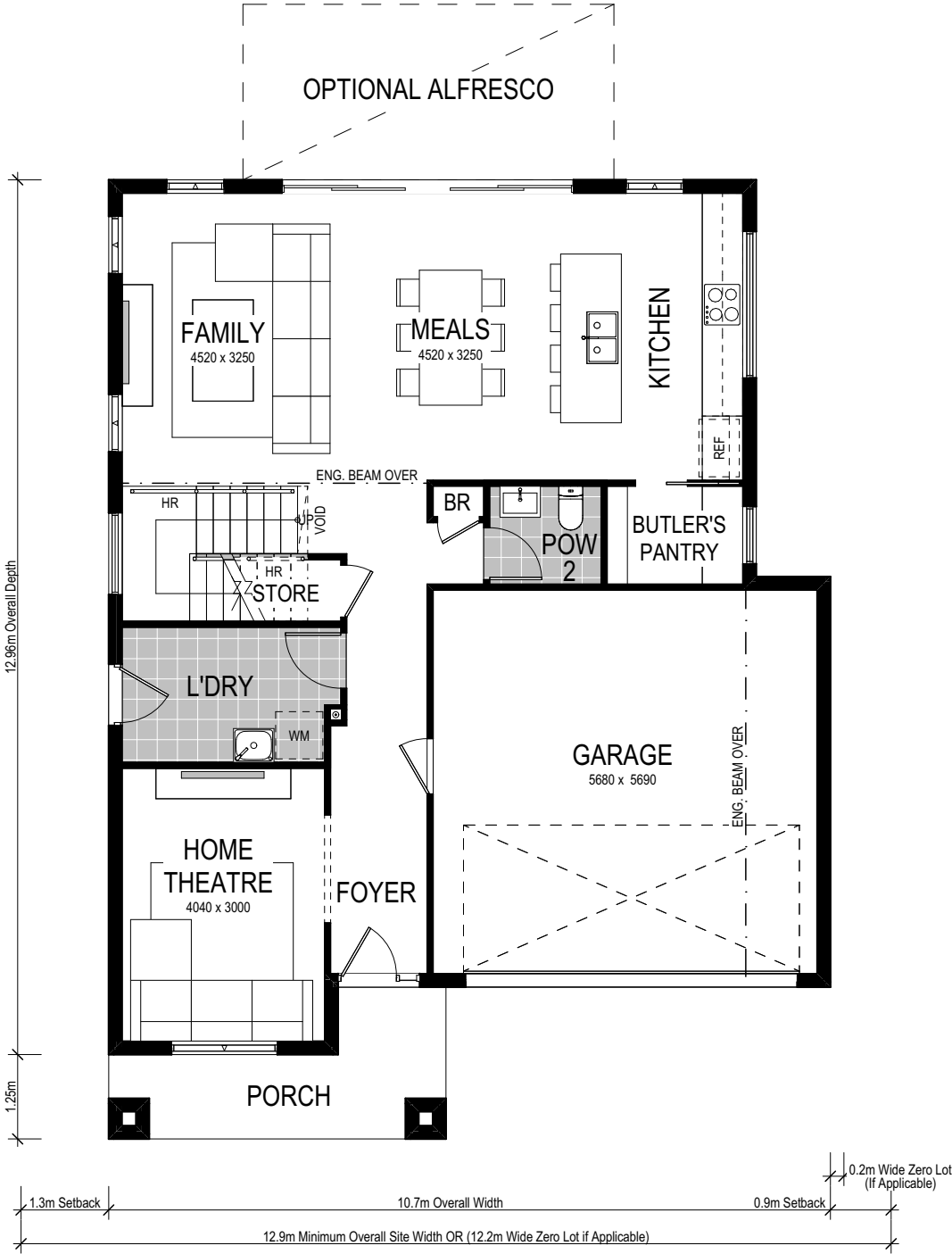
Ideal for level sites, the Byron 262 is suitable for sites with a 12.9m frontage (or 12.2m if zero lot applicable) or wider.

Available in four facades, the Byron 262 hosts ultimate street appeal and has been crafted with modern family living in mind.

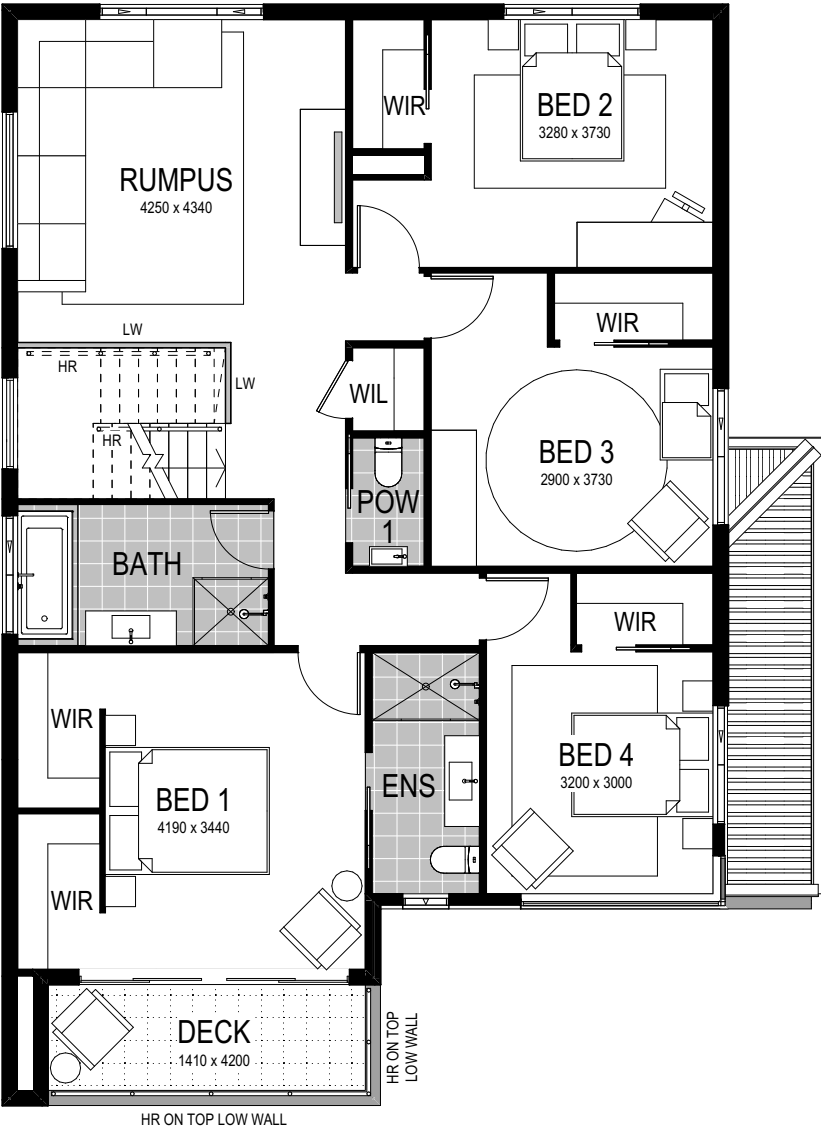


Option 1: Bedroom 1 to front

Lower Floor



Upper Floor



Scale: 1:100. Floor plan depicts Manhattan facade.

Byron 1 262

- 4 Bed
- 2.5 Bath
- 2 Park

The four-bedroom Byron 262 cleverly separates the living and entertaining zone from the bedrooms with a stunning U-shaped staircase running alongside the laundry. The lower level houses a home theatre, open-plan kitchen, meals and family zone with a conveniently placed powder room and a Butler's Pantry perfect for storing and preparing food. Truly the parent's oasis, an upper floor master suite features a T-wall dual walk-in robe and luxurious ensuite. Granting ultimate privacy and luxury, the Byron 1 262 floorplan delivers the master bedroom to the front of the upper floor with an adjoining private deck. The three remaining bedrooms include a walk-in robe and surround the main bathroom and rumpus room.

This home comes with many great features:

- ✓ Variety of open plan living areas
- ✓ Flexibility to adapt the floor plan
- ✓ Multiple facade options
- ✓ Easy to unfold onto alfresco area
- ✓ Butler's pantry
- ✓ Home theatre
- ✓ Rumpus room
- ✓ Walk-in robe in all bedrooms

A Byron 250 is on display at:

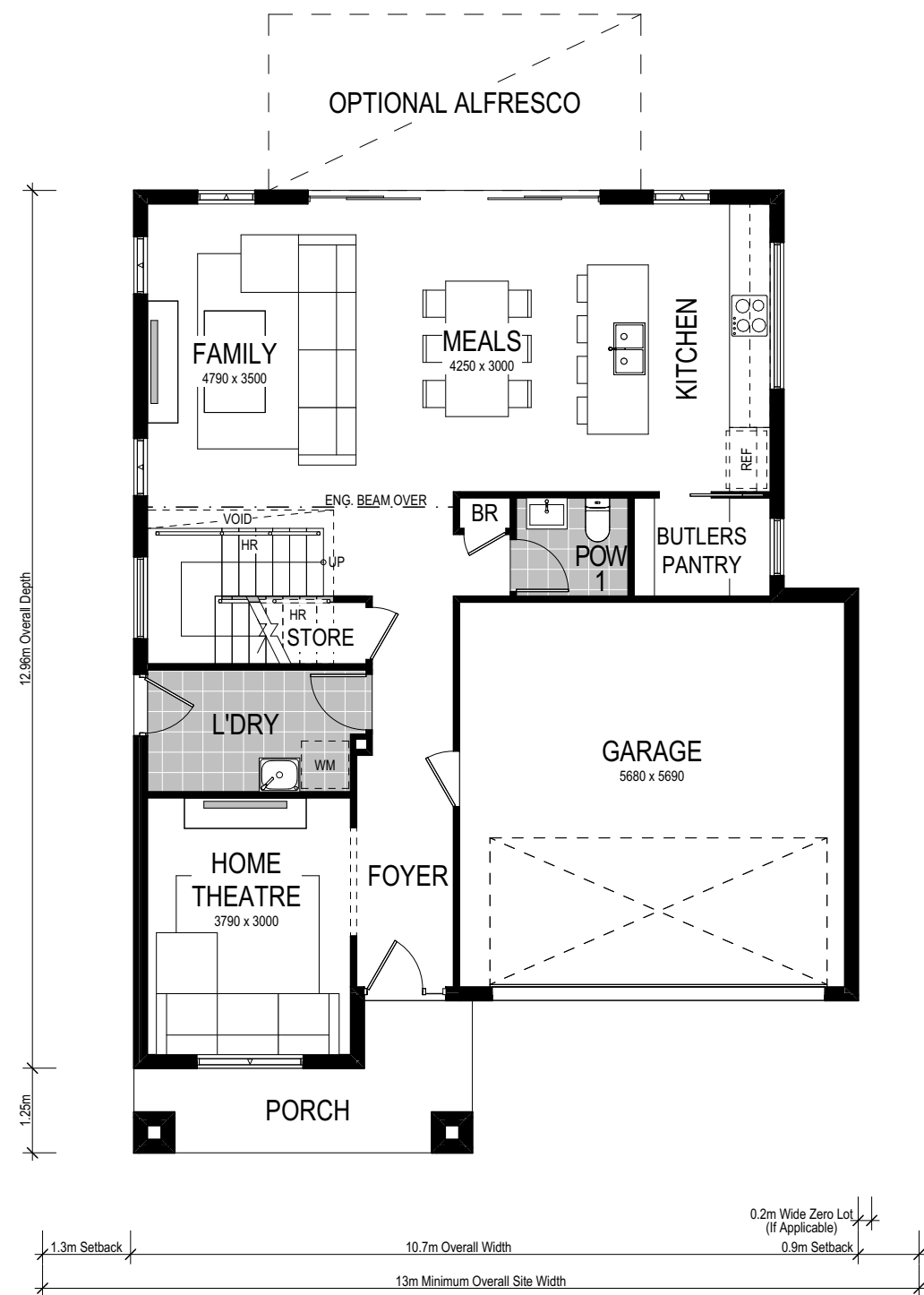
Brush Creek
89 Transfield Avenue
Edgeworth

A Byron 2 323 is on display at:

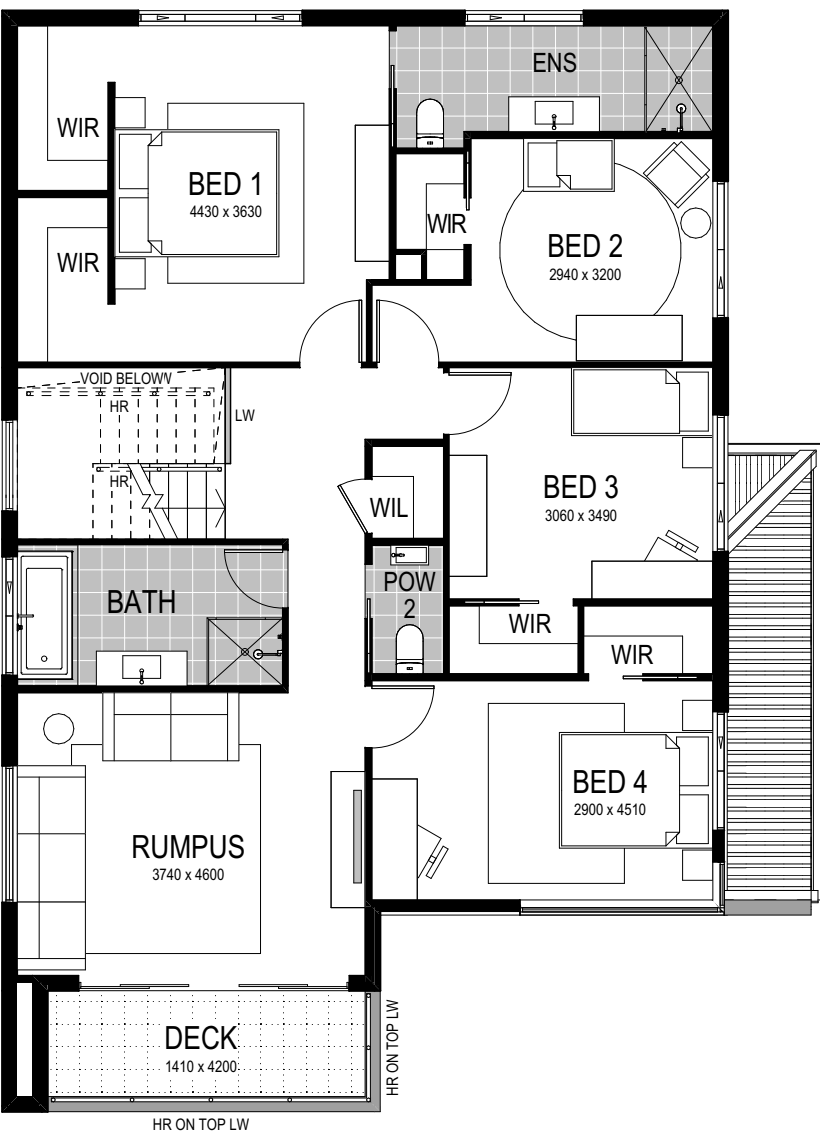
HomeWorld Thornton
49 Kingham Circuit
Thornton

Option 2: Bedroom 1 to rear

Lower Floor



Upper Floor



Scale: 1:100. Floor plan depicts Manhattan facade.

Byron 2 262

- 4 Bed
- 2.5 Bath
- 2 Park

Alongside the aforementioned luxurious features of the Byron 1 262, this alternate floorplan delivers a master bedroom to the rear of the upper floor — affording maximum privacy. Completing the upper level, the master suite is joined by three additional bedrooms, main bathroom and rumpus room — which seamlessly unfolds to an outdoor deck.

Designed for the modern family, the lower level features an open-plan kitchen, meals and family zone, plus Butler's Pantry, laundry and home theatre.

Live a lifestyle of luxury in the Byron 2 262.

This home comes with many great features:

- ✓ Variety of open plan living areas
- ✓ Flexibility to adapt the floor plan
- ✓ Multiple facade options
- ✓ Easy to unfold onto alfresco area
- ✓ Butler's pantry
- ✓ Home theatre
- ✓ Rumpus room
- ✓ Walk-in robe in all bedrooms

A Byron 250 is on display at:

Brush Creek
89 Transfield Avenue
Edgeworth


A Byron 2 323 is on display at:

HomeWorld Thornton
49 Kingham Circuit
Thornton

Facade options and features



Hamptons Facade

 **Roof Type**
Tiles

 **Total m²/Sq**
257.94/27.8



Manhattan Facade


 **Roof Type**
Colorbond

 **Total m²/Sq**
260.20/28.0




Executive Facade

 **Roof Type**
Tiles

 **Total m²/Sq**
259.23/27.9



Metro Facade

 **Roof Type**
Tiles

 **Total m²/Sq**
249.38/26.8

Note: Artists impressions and pictures shown in this brochure may not be standard finishes – please refer to standard inclusions list for details. Images may depict homes from other design ranges and are used for illustrative purposes only.



Important - please read - copyright ©

All brochures, sketches & plans, whether conceptual or architectural, that we have developed on your behalf remain the property of Montgomery Homes under copyright law & we retain & claim all rights to these plans. Despite popular belief, changing our plans by 50% or more does not avoid legal responsibility for a copyright breach.