

Facade options and features



Grande Facade

Roof Type
Tiles

Total m²/Sq
249.48/26.9



Hamptons Facade

Roof Type
Tiles

Total m²/Sq
248.80/26.8



Executive Facade

Roof Type
Tiles

Total m²/Sq
248.24/26.7



Cosmo Facade

Roof Type
Tiles

Total m²/Sq
248.06/26.7



Metro Facade

Roof Type
Tiles

Total m²/Sq
244.98/26.4

Note: Artist's impressions and pictures shown in this brochure may not be standard finishes – please refer to standard inclusions list for details. Images may depict homes from other design ranges and are used for illustrative purposes only.

Important - please read - copyright ©

All brochures, sketches & plans, whether conceptual or architectural, that we have developed on your behalf remain the property of Montgomery Homes under copyright law & we retain & claim all rights to these plans. Despite popular belief, changing our plans by 50% or more does not avoid legal responsibility for a copyright breach.

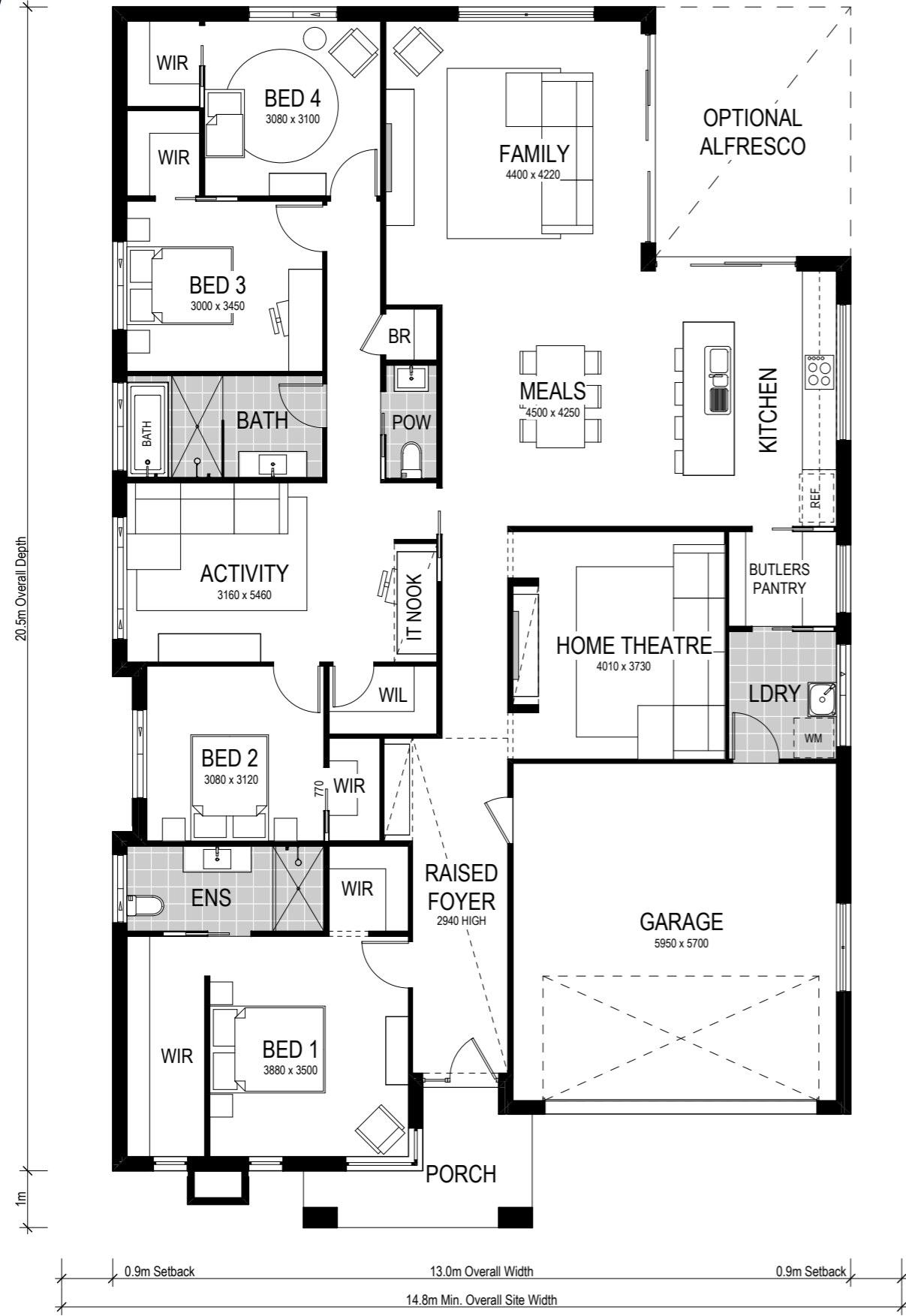


Avalon 249



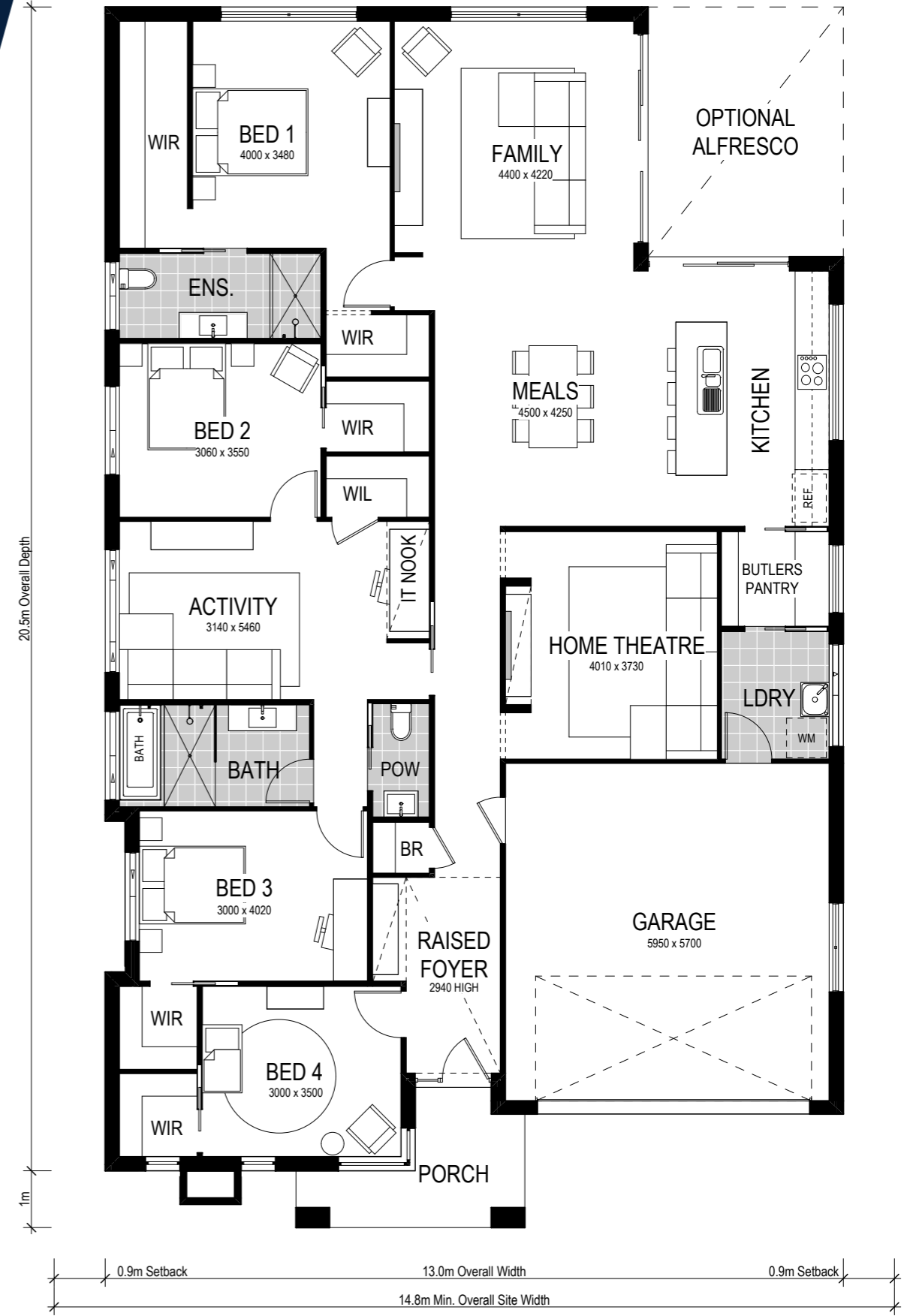
Option 1:

Bedroom 1
to front



Option 2:

Bedroom 1
to rear



Scale: 1:100. Floor plan depicts Grande facade.

Avalon 249

- 4 Bed
- 2 Bath
- 2 Park

The Avalon 249 is a single storey design perfectly suited for level sites with a 14.8m frontage or wider. The design features three living areas, including a separate home theatre room, and four sizeable bedrooms. A highlight of this home is the contemporary Butler's pantry and laundry that provides ingress from the garage to the kitchen. Consider Avalon 1 or Avalon 2 layout which places the main bedroom at the front or the rear of the home.

This home comes with many great features:

- ✓ Variety of open plan living areas
- ✓ Flexibility to adapt the floor plan
- ✓ Easy to unfold onto alfresco area
- ✓ Smart storage options
- ✓ Multiple facade options
- ✓ Butler's pantry
- ✓ Walk-in robe in every bedroom
- ✓ IT/study nook
- ✓ Home theatre

An Avalon 1 242 is on display at:

- Warnervale**
18 Scarlett Street,
Hamlyn Terrace
- Billy's Lookout Estate**
47 Pitt Street,
Teralba, Lake Macquarie