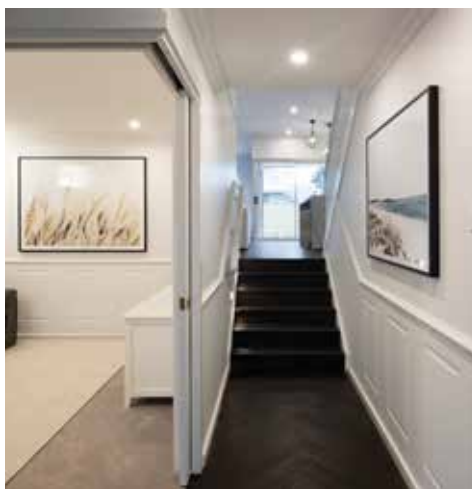




**MONTGOMERY**  
HOMES






*Whitehaven 306*



**SLOPING**  
SITES



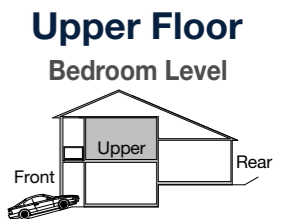
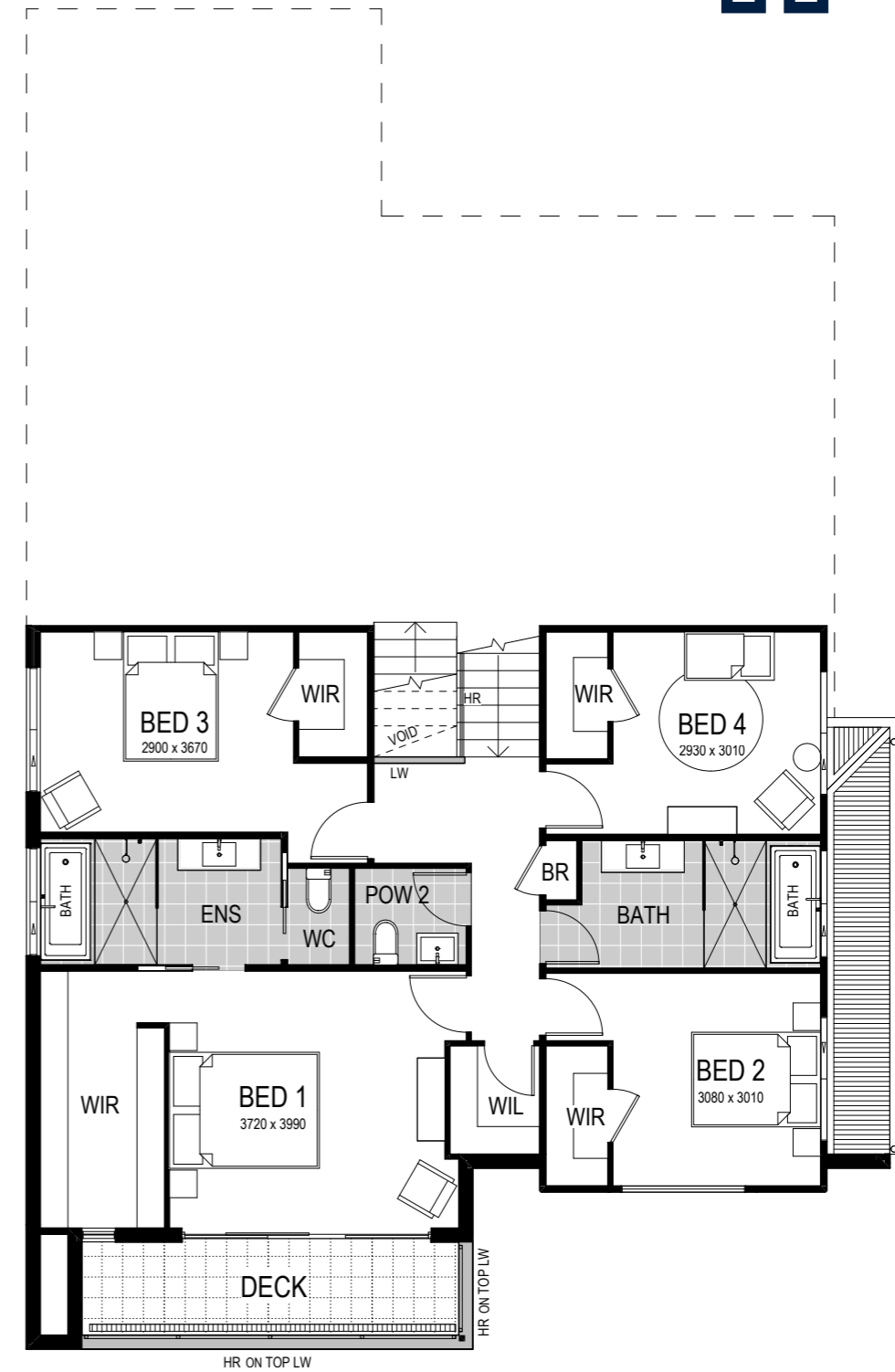
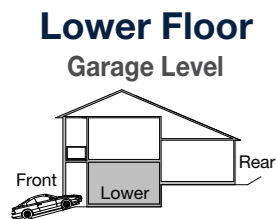
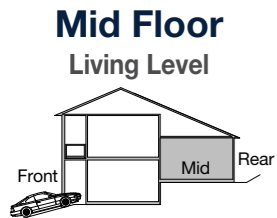
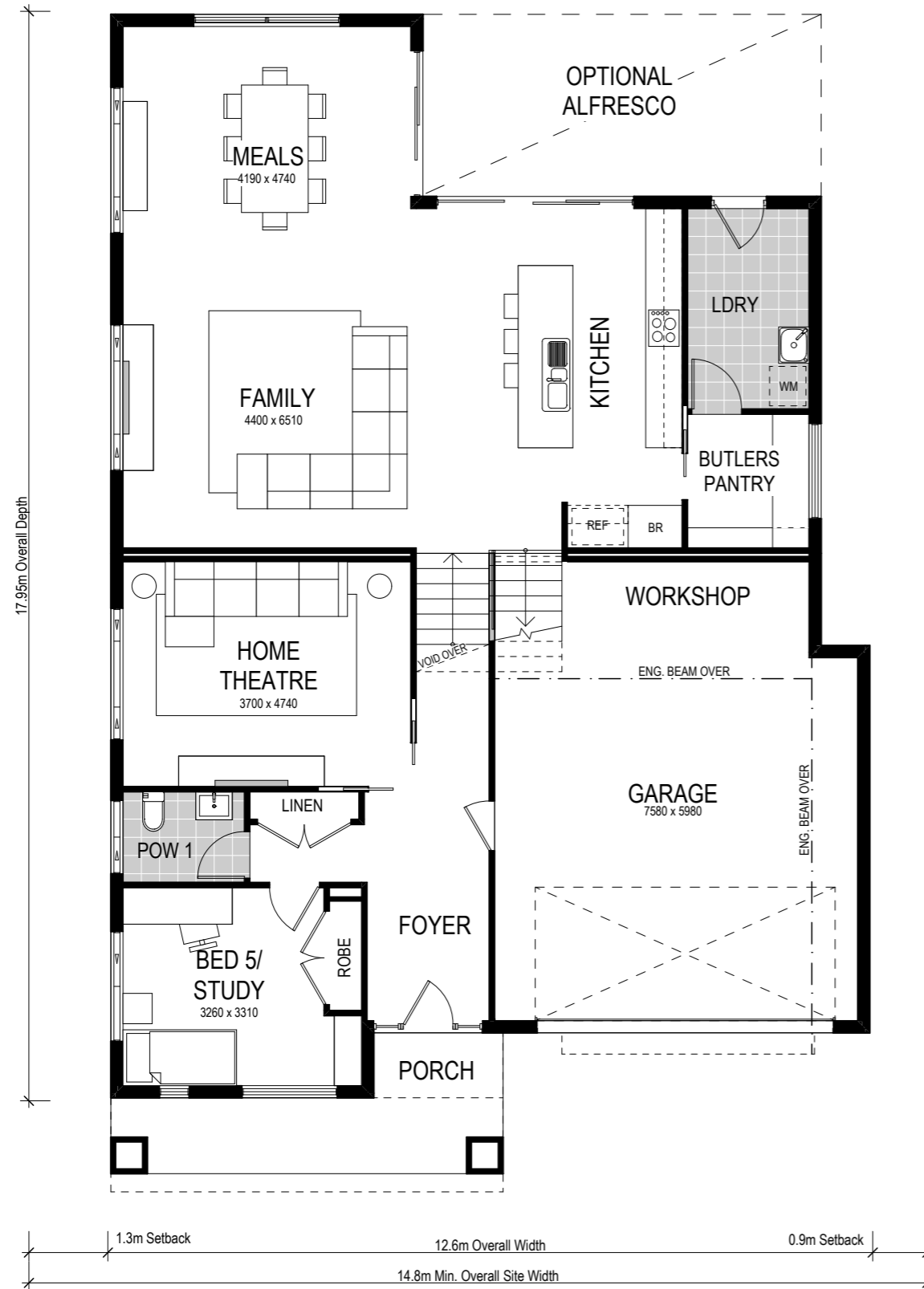
# Whitehaven 306



  
 5 Bed    2.5 Bath    2 Park

Our sloping site specialist techniques have been applied to our Whitehaven range to develop a stylish home for an uphill sloping site. The Whitehaven is a split level design that provides multiple living areas which makes it perfect for big families who appreciate space to retreat as well as spend time together. A brand new design by Montgomery Homes, you can be one of the first to own a stunning Whitehaven.







Scale: 1:100. Floor plan depicts Manhattan facade.

# Whitehaven 306

- 5 Bed
- 2.5 Bath
- 2 Park

This tri-level split design features five spacious bedrooms, 2.5 bathrooms and convenient internal access to the spacious garage and workshop. A generous home theatre on the lower level allows for family movie nights, with the four main bedrooms secluded on the upper level. This design benefits from generous proportions including a contemporary and functional open plan kitchen, living area and alfresco — plus, a highly sought-after Butler's pantry.

Our specially designed homes for sloping sites feature many benefits:

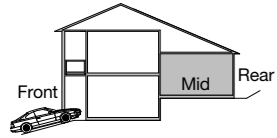
- ✓ Abundant natural light and air-flow
- ✓ Separate living areas on different levels
- ✓ Preserve natural drainage
- ✓ Enhance outlooks and views
- ✓ Unique and architectural looking design
- ✓ Less excavation
- ✓ A flatter driveway
- ✓ Designed to follow slope of land
- ✓ Maximise space
- ✓ Garage workshop

A Whitehaven 238 is on display at:

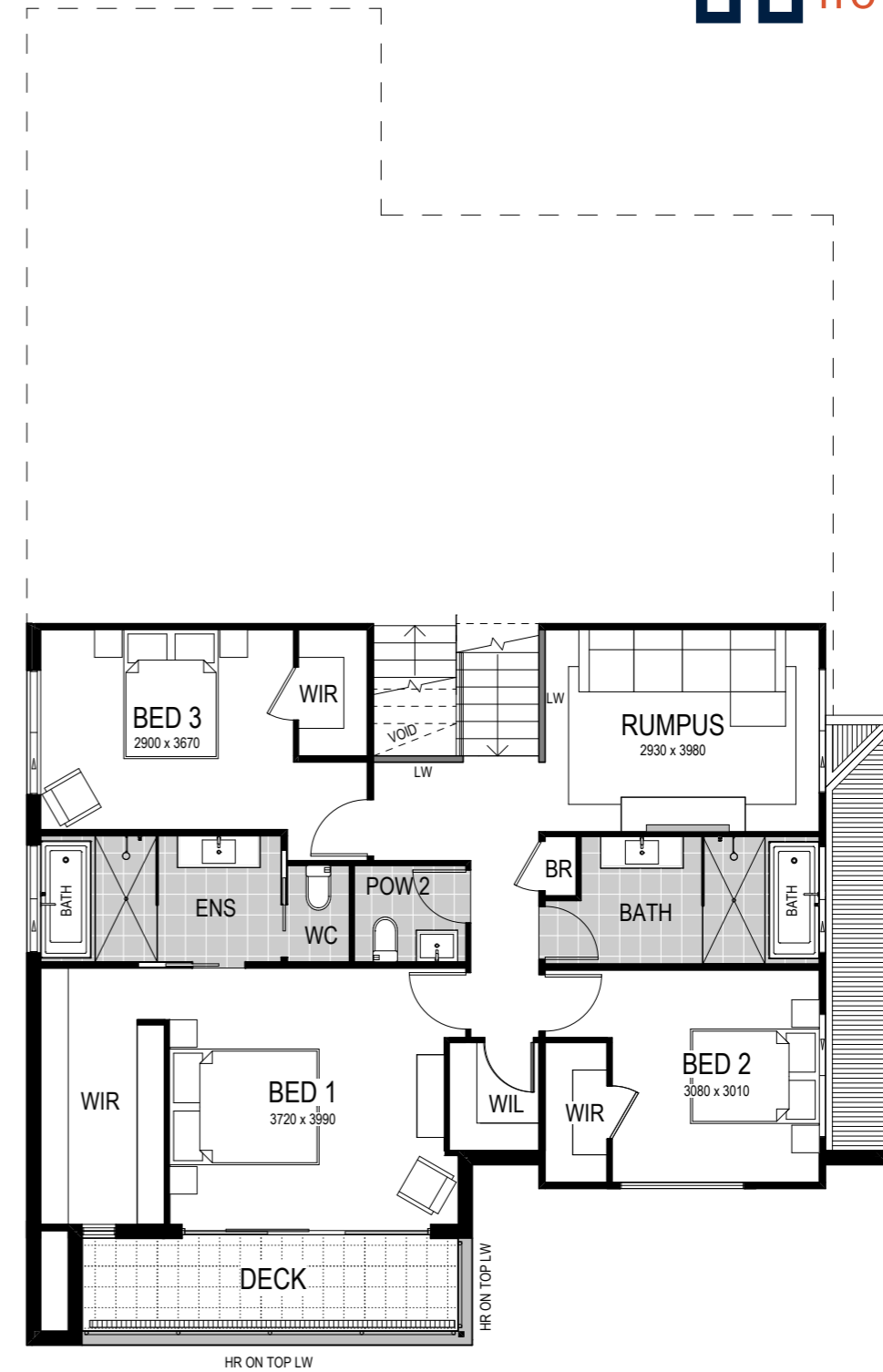
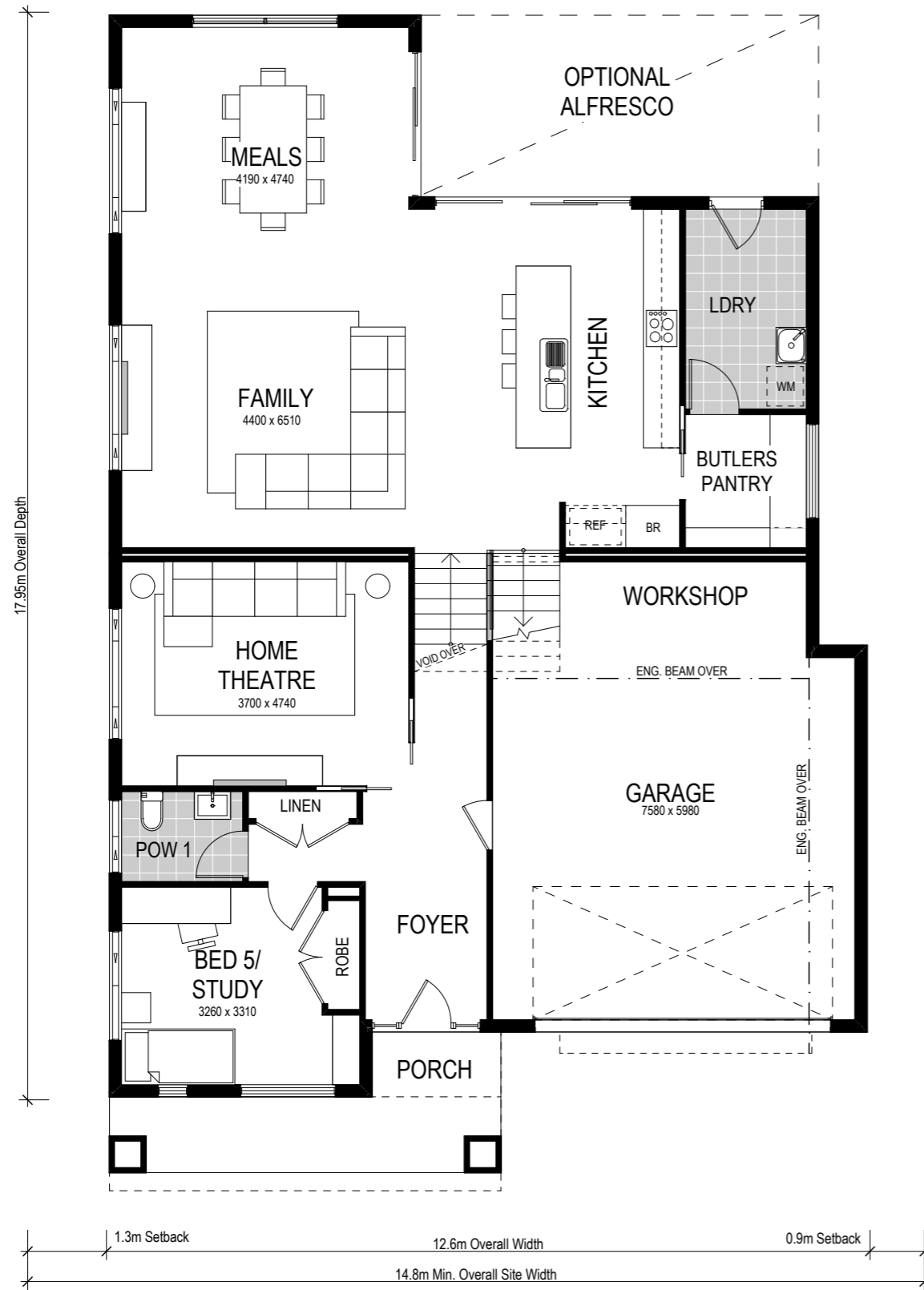
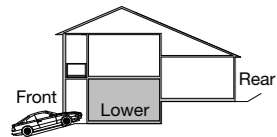
**HomeWorld Box Hill**  
19 Gittel Street  
Box Hill, Sydney

# Option 2 Rumpus in lieu of Bedroom 4

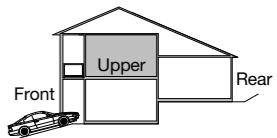
## Mid Floor Living Level



## Lower Floor Garage Level



## Upper Floor Bedroom Level



Scale: 1:100. Floor plan depicts Manhattan facade.

# Whitehaven 306



This tri-level split design offers an alternate floorplan, featuring four spacious bedrooms, 2.5 bedrooms and the conversion of bedroom four to a rumpus room on the upper level. With convenient internal access to the spacious garage and workshop, this design also features a generous home theatre on the lower level – perfect for family movie nights. This design benefits from generous proportions including a contemporary and functional open plan kitchen, living area and alfresco – plus, a highly sought-after Butler’s pantry.

Our specially designed homes for sloping sites feature many benefits:

- ✓ Abundant natural light and air-flow
- ✓ Separate living areas on different levels
- ✓ Preserve natural drainage
- ✓ Enhance outlooks and views
- ✓ Unique and architectural looking design
- ✓ Less excavation
- ✓ A flatter driveway
- ✓ Designed to follow slope of land
- ✓ Maximise space
- ✓ Garage workshop

A Whitehaven 238 is on display at:

**HomeWorld Box Hill**  
19 Gittel Street  
Box Hill, Sydney

# Facade options and features



**Hamptons Facade**


 Roof Type  
Tiles

 Total m<sup>2</sup>/Sq  
299.96/32.3



**Retro Facade**

 Roof Type  
Colorbond

 Total m<sup>2</sup>/Sq  
297.41/32.0



**Manhattan Facade**

 Roof Type  
Colorbond

 Total m<sup>2</sup>/Sq  
306.10/32.9




**Executive Facade**

 Roof Type  
Tiles

 Total m<sup>2</sup>/Sq  
296.20/31.9



**Metro Facade**

 Roof Type  
Tiles

 Total m<sup>2</sup>/Sq  
297.14/32.0

Note: Artist's impressions and pictures shown in this brochure may not be standard finishes – please refer to standard inclusions list for details. Images may depict homes from other design ranges and are used for illustrative purposes only.

*Important - please read - copyright ©*



All brochures, sketches & plans, whether conceptual or architectural, that we have developed on your behalf remain the property of Montgomery Homes under copyright law & we retain & claim all rights to these plans. Despite popular belief, changing our plans by 50% or more does not avoid legal responsibility for a copyright breach.