

Facade options and features



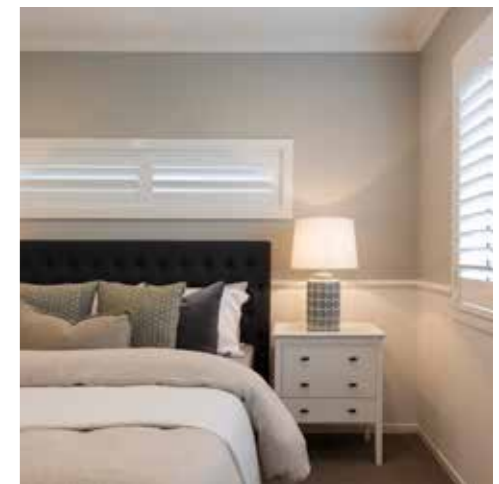
Executive Facade

 **Roof Type**
Colorbond
  **Total m²/Sq**
262.33/28.2



Metro Facade

 **Roof Type**
Tiles
  **Total m²/Sq**
261.97/28.2



Note: Artist's impressions and pictures shown in this brochure may not be standard finishes – please refer to standard inclusions list for details. Images may depict homes from other design ranges and are used for illustrative purposes only.

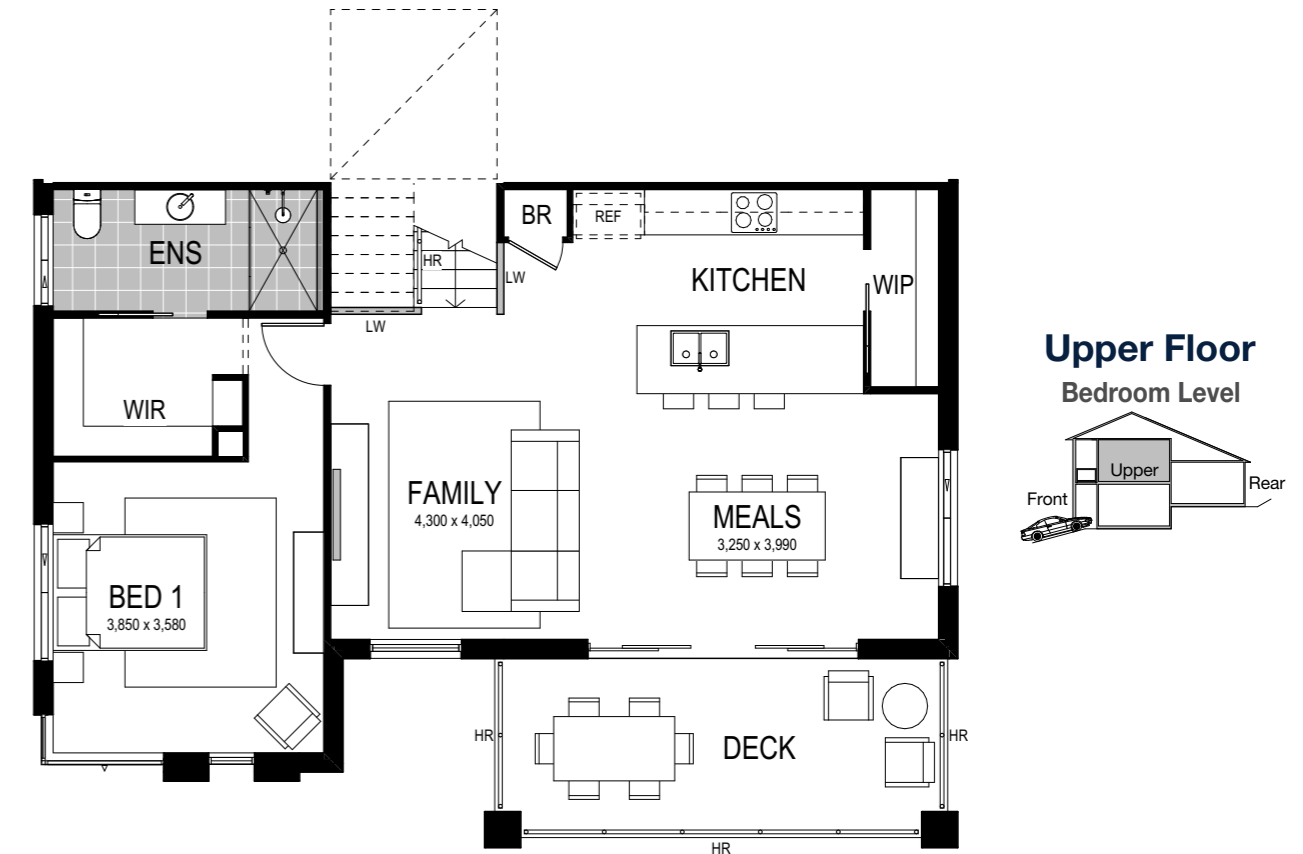
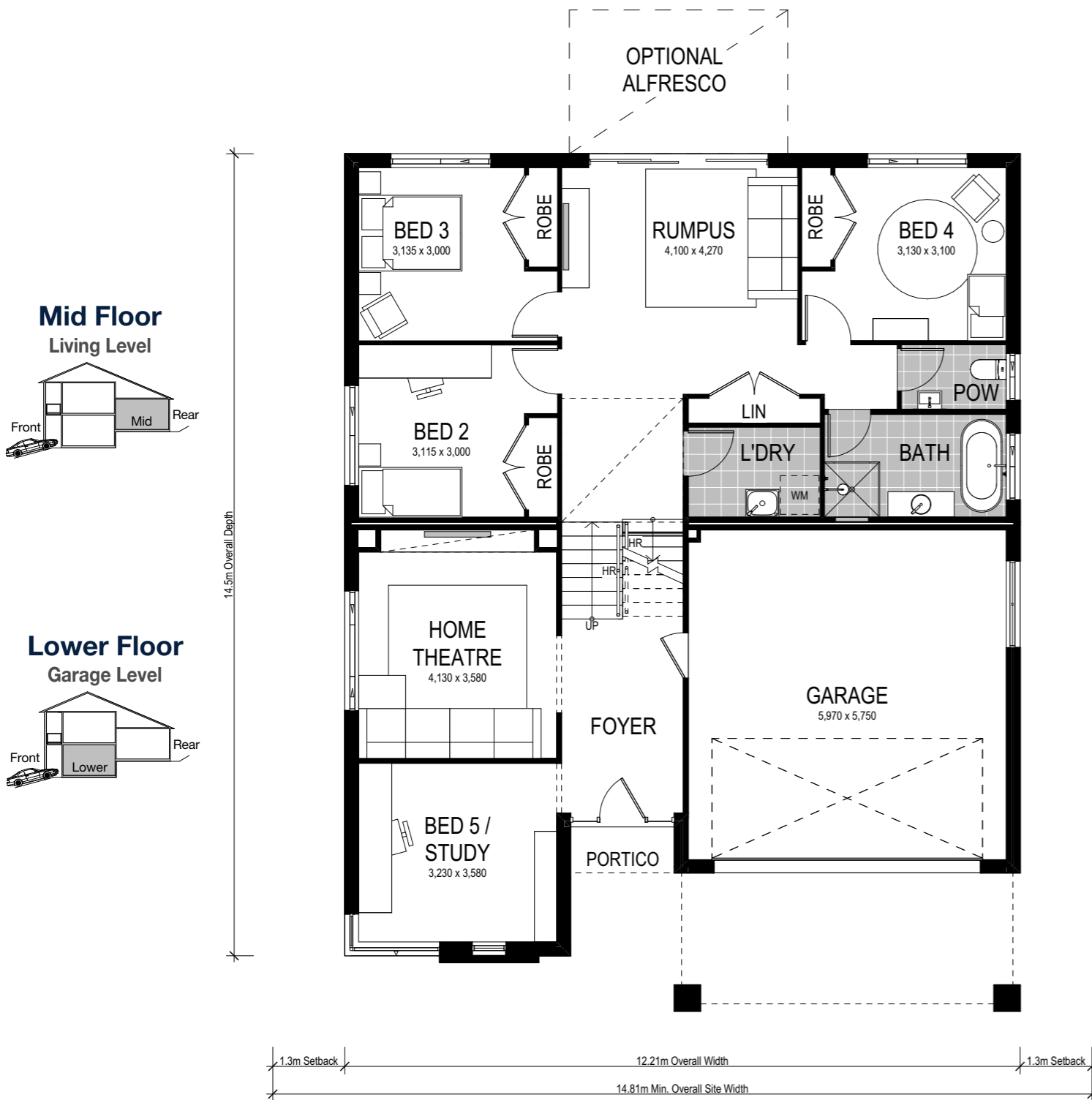
Important - please read - copyright ©

All brochures, sketches & plans, whether conceptual or architectural, that we have developed on your behalf remain the property of Montgomery Homes under copyright law & we retain & claim all rights to these plans. Despite popular belief, changing our plans by 50% or more does not avoid legal responsibility for a copyright breach.



Riviera 2 261





Scale: 1:100. Floor plan depicts Executive facade.

Riviera 2 261

- 5 Bed
- 2.5 Bath
- 2 Park

The Riviera 2 261 is one of our stand-out split-level designs and is the perfect home to complement an uphill sloping site. Entering on the lower level, be inspired by the generous home theatre, study (or additional bedroom) and internal access to the spacious garage. The three main bedrooms feature on the mid-level, alongside the laundry and main bathroom — plus, a spacious rumpus room seamlessly unfolding to the alfresco area. Luxury living is redefined on the upper level, with a generous master bedroom with walk-in-robe and ensuite, open-plan kitchen and living space with walk-in-pantry and a large outdoor deck perfect for entertaining guests.

Our specially designed homes for sloping sites feature many benefits:

- ✓ Abundant natural light and air-flow
- ✓ Separate living areas on different levels
- ✓ Preserve natural drainage
- ✓ Enhance outlooks and views
- ✓ Unique and architectural looking design
- ✓ Less excavation
- ✓ A flatter driveway
- ✓ Designed to follow slope of land
- ✓ Maximise space

A Riviera 1 262 is on display at:

HomeWorld Warnervale
18 Scarlett Street,
Hamlyn Terrace