

Facade options & features

Facade	Roof type	Total m <sup>2</sup>	Total squares
Metro	Tiles	229.36m <sup>2</sup>	24.7 squares
Executive	Tiles	229.86m <sup>2</sup>	24.7 squares
Hamptons	Tiles	233.42m <sup>2</sup>	25.1 squares



Note: Artists impressions and pictures shown in this brochure may not be standard finishes – please refer to standard inclusions list for details.



Note: Artists impressions and pictures shown in this brochure may not be standard finishes – please refer to standard inclusions list for details.

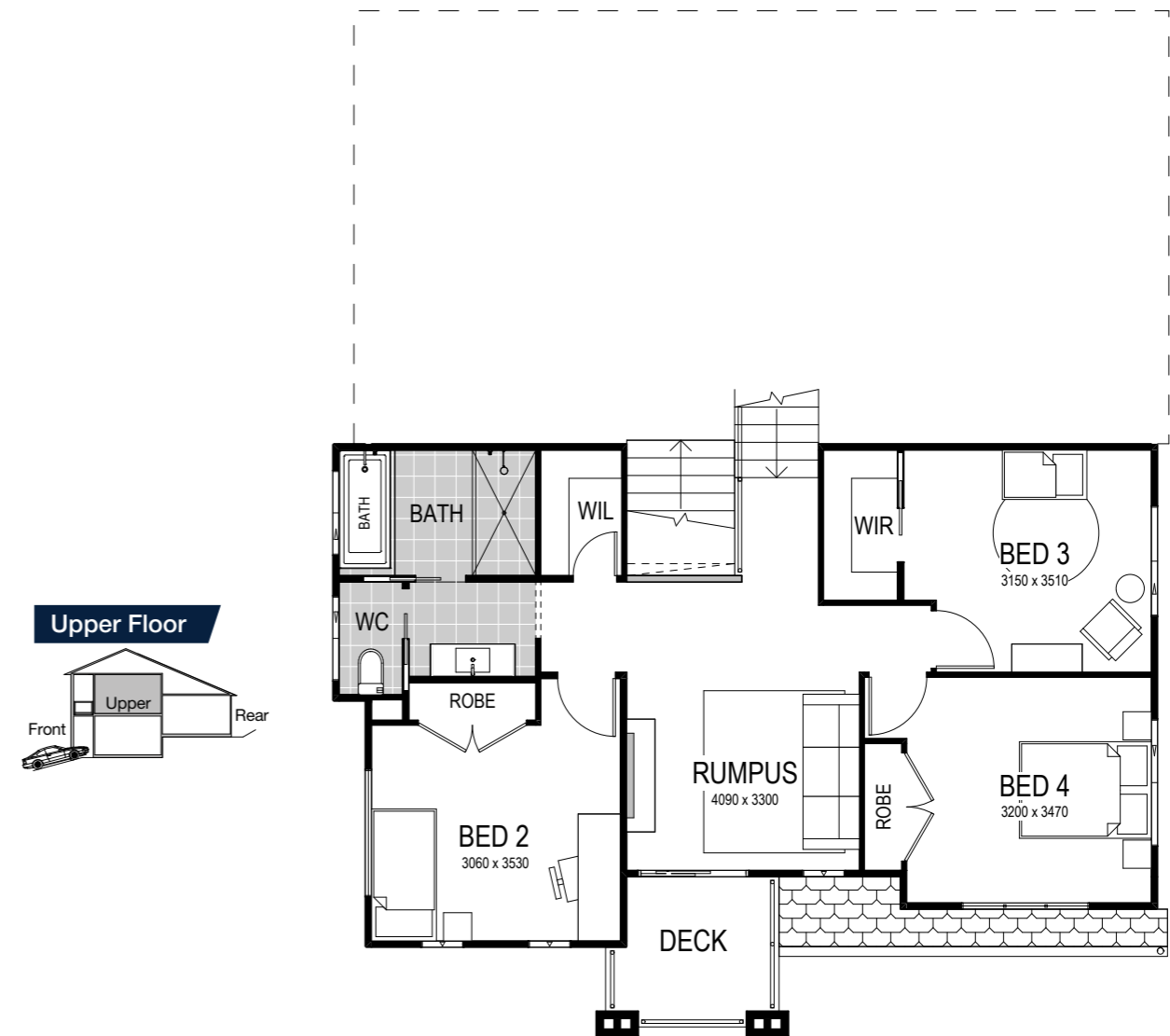
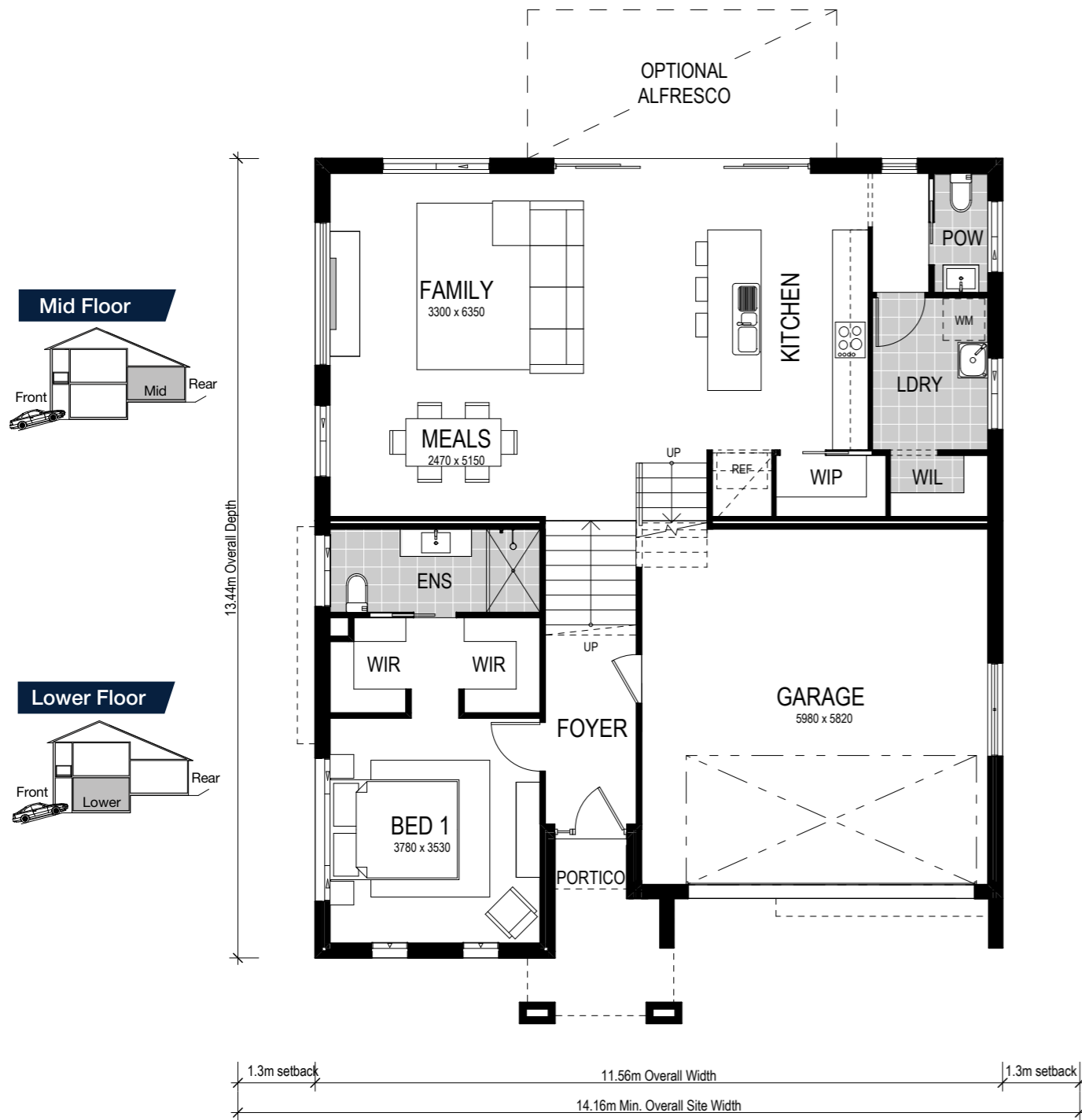


# Riviera 1 230

 4 Beds
  2.5 Baths
  2 Parks

The Riviera design is one of our stand-out split level designs and is the perfect home to complement an uphill sloping site. Inside the home, a stunning entry awaits. With elegance and space surrounding you, you'll find the kitchen and primary living rooms on the mid floor. This central family area opens up to a large optional alfresco for covered backyard play and entertaining.

The design also features a separate rumpus room and four sizeable bedrooms. The upper floor provides a casual retreat for the kids, which also opens to an enchanting deck to overlook your potential views.



The similar design (Riviera 1 267) is on display at:

**Redbank Estate**  
**13 Yobarnie Avenue,**  
**North Richmond**

- 4 Beds
- 2.5 Baths
- 2 Parks

The Riviera 1 230 is a split level design and is perfectly suited to an uphill sloping site with a 14.16m frontage or larger. The design features a separate rumpus room and four sizeable bedrooms. Available in three contemporary facades.

**Important Notice: Retro facade plan shown. Scale: 1:100. Copyright ©** All brochures, sketches & plans, whether conceptual or architectural, that we have developed on your behalf remain the property of Montgomery Homes under copyright law & we retain & claim all rights to these plans. Despite popular belief, changing our plans by 50% or more does not avoid legal responsibility for a copyright breach. Artwork update: 12/10/2020.