



MONTGOMERY
HOMES



San Tropez 243

 4 Beds  2.5 Baths  2 Parks

Our sloping site specialist techniques have been applied to our San Tropez range to craft homes that caress a sideways sloping site. Our San Tropez is a split tri-level design that provides multiple areas which makes it perfect for big families who appreciate space to retreat as well as spend time together. Oozing street appeal and facilitating relaxed family living, the San Tropez is fast-becoming a Montgomery Homes favourite.

Note: Artists impressions and pictures shown in this brochure may not be standard finishes – please refer to standard inclusions list for details.

montgomeryhomes.com.au

 **SLOPING**
SIDeways

Hamptons Facade



Executive Facade



Metro Facade



San Tropez 243

 4 Beds
  2.5 Baths
  2 Parks

The **San Tropez 243** is a split level slab design for a sideways slope. This design features kitchen and main entertaining areas on the mid floor, providing privacy for the primary bedrooms and master suite on the upper floor, with rumpus and fourth (or guest) bedroom on the lower floor. Available in three contemporary facades — see adjacent for facade options and details.

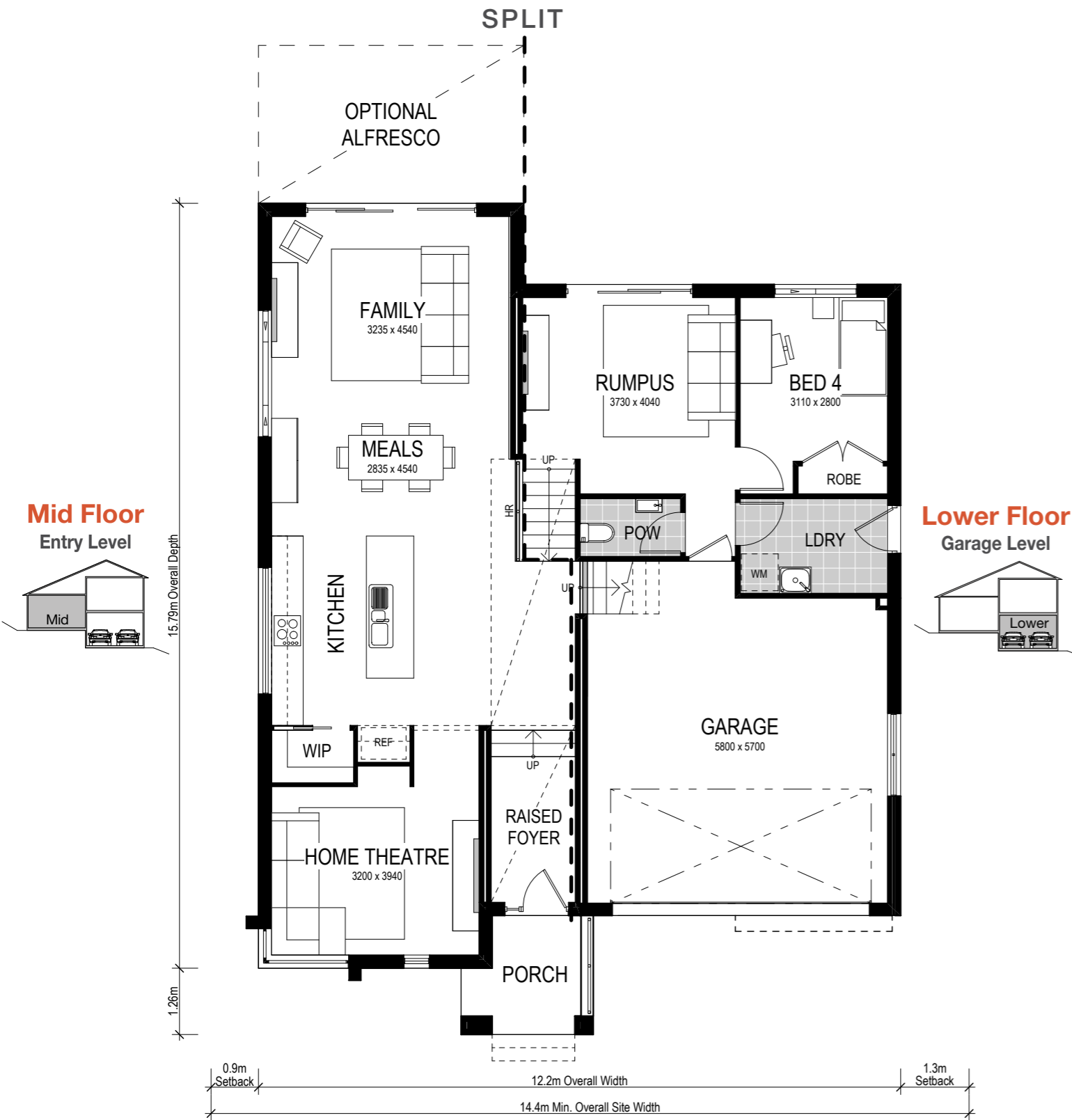
Facade options & features

Facade	Roof type	Total m ²	Total squares
Metro	Tiles	242.93m ²	26.2 squares
Executive	Tiles	242.75 m ²	26.1 squares
Hamptons	Tiles	243.53 m ²	26.2 squares

Full Split Option

This design is also available in a **Full Split Option** rather than a split slab. This option is best suited for a block with a steep sideways slope and uses our specialised bearers and joists technique. Additional charges apply. This option features kitchen, main entertaining areas on the upper floor along with the primary bedrooms and home theatre. With the rumpus and fourth (or guest) bedroom on the lower floor. This option is available in the same three facades. See details for the Full Split on page 5.



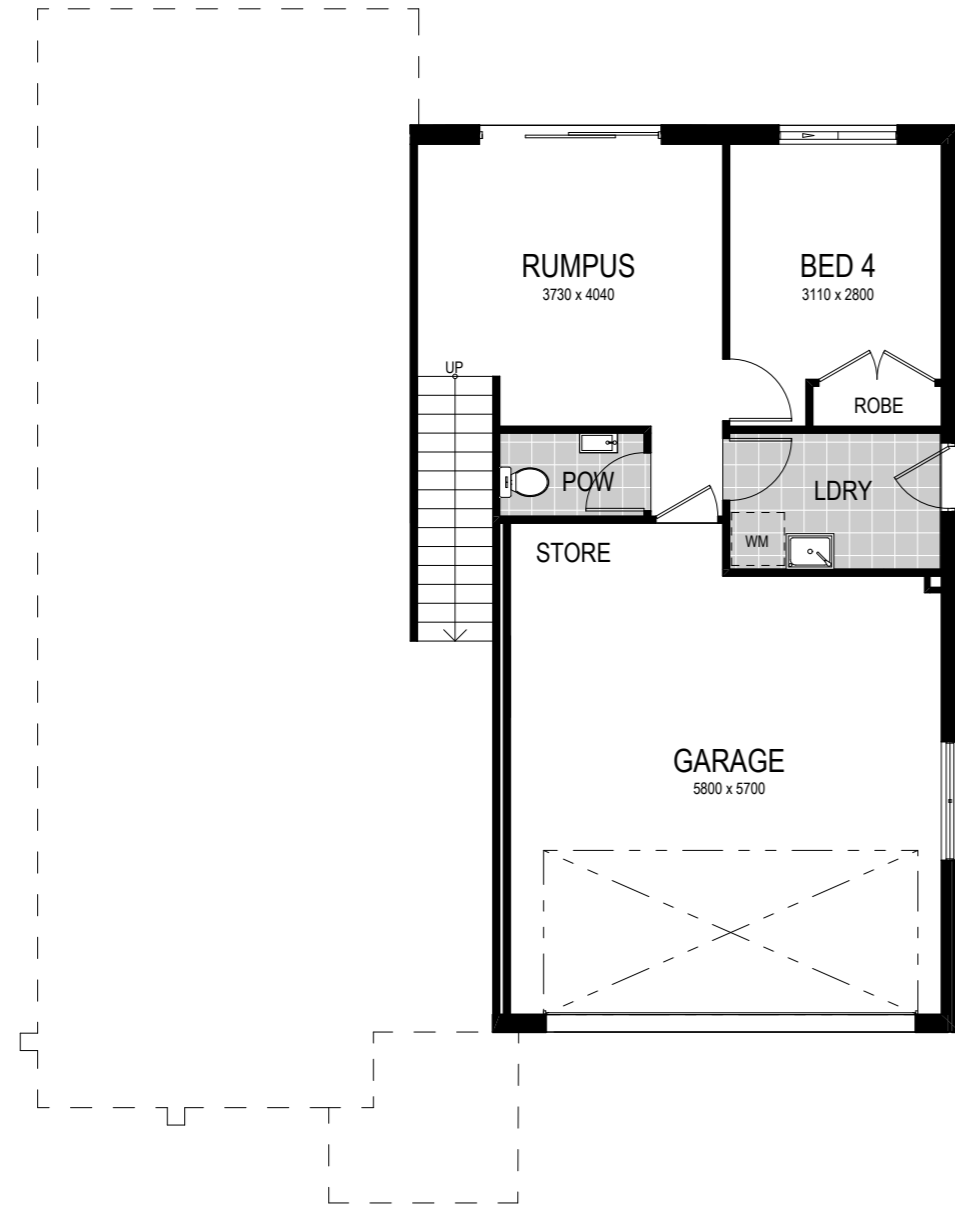
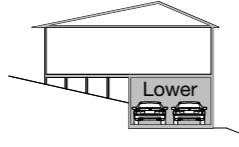


- 4 Beds
- 2.5 Baths
- 2 Parks

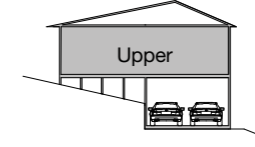
The **San Tropez 243** is a split level slab design for a sideways slope. This design features kitchen and main entertaining areas on the mid floor, providing privacy for the primary bedrooms and master suite on the upper floor, with rumpus and fourth (or guest) bedroom on the lower floor. Available in three contemporary facades — see page one for facade options and details.

Important Notice: Executive facade plan shown. Scale: 1:100. Copyright © All brochures, sketches & plans, whether conceptual or architectural, that we have developed on your behalf remain the property of Montgomery Homes under copyright law & we retain & claim all rights to these plans. Despite popular belief, changing our plans by 50% or more does not avoid legal responsibility for a copyright breach. Artwork update: 250620.

Lower Floor
Garage Level



Upper Floor
Full Split



Full Split Option

The **San Tropez 243** is also available in a **Full Split** configuration rather than a split level slab. This option is best suited for a block with a steep sideways slope and uses our specialised bearers and joists technique. Additional costs apply. This option features kitchen, main entertaining areas on the upper floor along with the primary bedrooms and home theatre. With the rumpus and fourth (or guest) bedroom on the lower floor. This option is available in the same three facades as shown on page one.

Important Notice: Executive facade plan shown. Scale: 1:100. Copyright © All brochures, sketches & plans, whether conceptual or architectural, that we have developed on your behalf remain the property of Montgomery Homes under copyright law & we retain & claim all rights to these plans. Despite popular belief, changing our plans by 50% or more does not avoid legal responsibility for a copyright breach. Artwork update: 020720.



AWARD WINNING HOMES