

Facade options & features

Facade	Roof type	Total m <sup>2</sup>	Total squares
Metro	Tiles	262.46m <sup>2</sup>	28.3 squares
Retro	Colorbond	266.63m <sup>2</sup>	28.7 squares
Executive	Tiles	264.48m <sup>2</sup>	28.5 squares
Hamptons	Tiles	267.67m <sup>2</sup>	28.8 squares



Note: Facade shown above displays optional deck extension to front of house (additional costs apply). Artists impressions and pictures shown in this brochure may not be standard finishes – please refer to standard inclusions list for details.

Hamptons Facade



Executive Facade



Retro Facade



Metro Facade



Note: Artists impressions and pictures shown in this brochure may not be standard finishes – please refer to standard inclusions list for details.

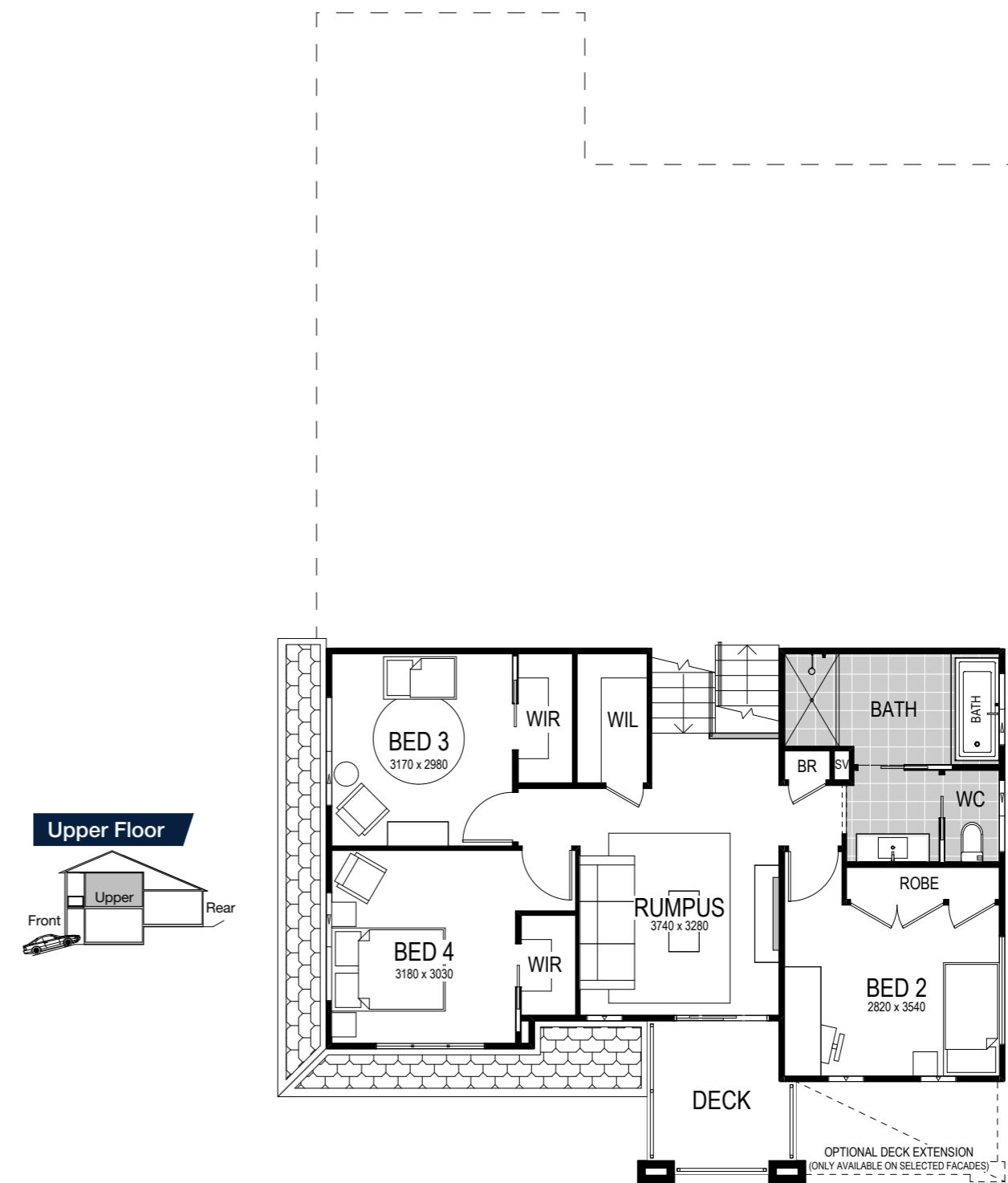
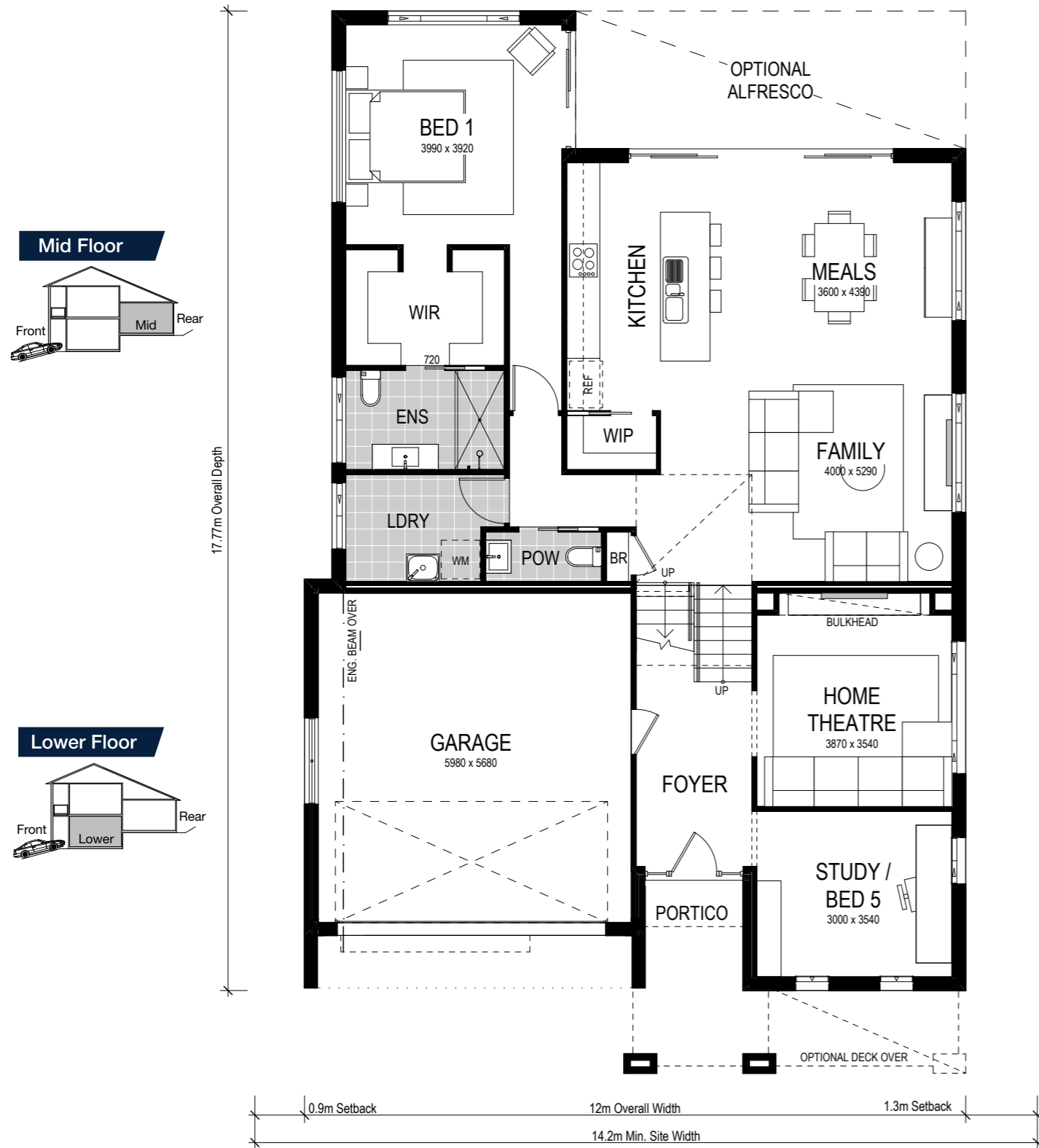


Riviera 1 267




5 Beds
 2.5 Baths
 2 Parks

The Riviera design is one of our stand-out split level designs and is the perfect home to complement an uphill sloping site. Inside the home, a stunning entry awaits. With elegance and space surrounding you, you'll find the kitchen and primary living rooms on the mid floor. This central family area opens up to a large optional alfresco for covered backyard play and entertaining.

The design also features a separate home theatre and rumpus room, plus five sizeable bedrooms. The upper floor provides a casual retreat for the kids, which also opens to an enchanting deck to overlook your potential views. Consider a stunning open riser staircase to achieve a grand entry with higher ceilings.



This house is on display from 17 October at:  
**Redbank Estate**  
 13 Yobarnie Avenue,  
 North Richmond

 5 Beds  
 2.5 Baths  
 2 Parks

The Riviera 1 267 is a split level design and is perfectly suited to an uphill sloping site with a 14.2m frontage or larger. The design features a separate home theatre, rumpus room and living areas, plus five sizeable bedrooms. Available in four contemporary facades.

**Important Notice:** *Hamptons facade plan shown. Scale: 1:100. Copyright © All brochures, sketches & plans, whether conceptual or architectural, that we have developed on your behalf remain the property of Montgomery Homes under copyright law & we retain & claim all rights to these plans. Despite popular belief, changing our plans by 50% or more does not avoid legal responsibility for a copyright breach. Artwork update: 07/10/2020.*