



Riviera 1 262

Our specially designed homes for sloping sites feature many benefits

- ✓ Open plan living
- ✓ Split level design
- ✓ Rumpus room
- ✓ Enhanced views
- ✓ Maximise yard space
- ✓ Perfect for an uphill site
- ✓ Unique design
- ✓ Walk-in linen and pantry
- ✓ Dual walk-in robe in master suite



MONTGOMERY HOMES

Executive Facade



Metro Facade



montgomeryhomes.com.au

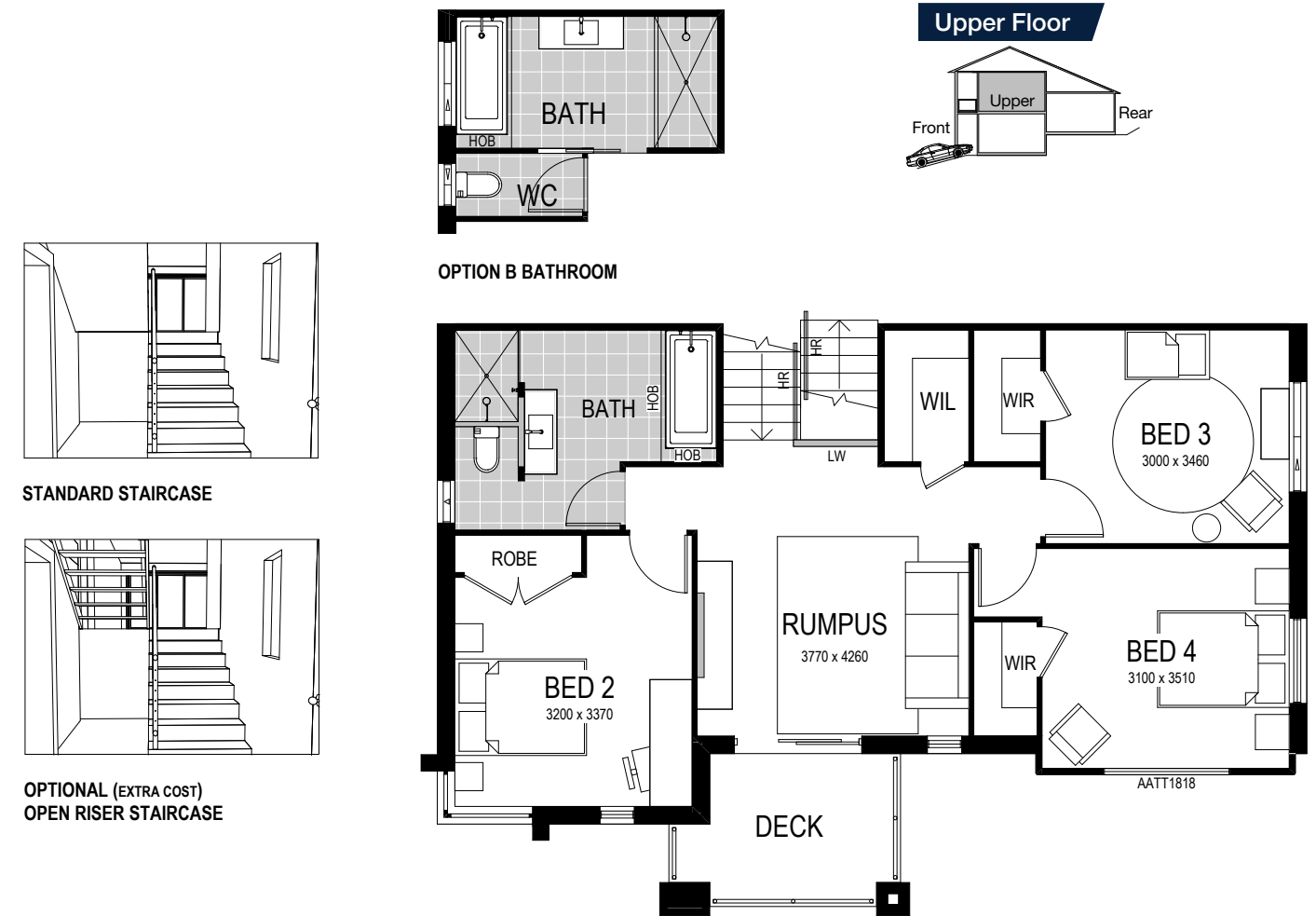
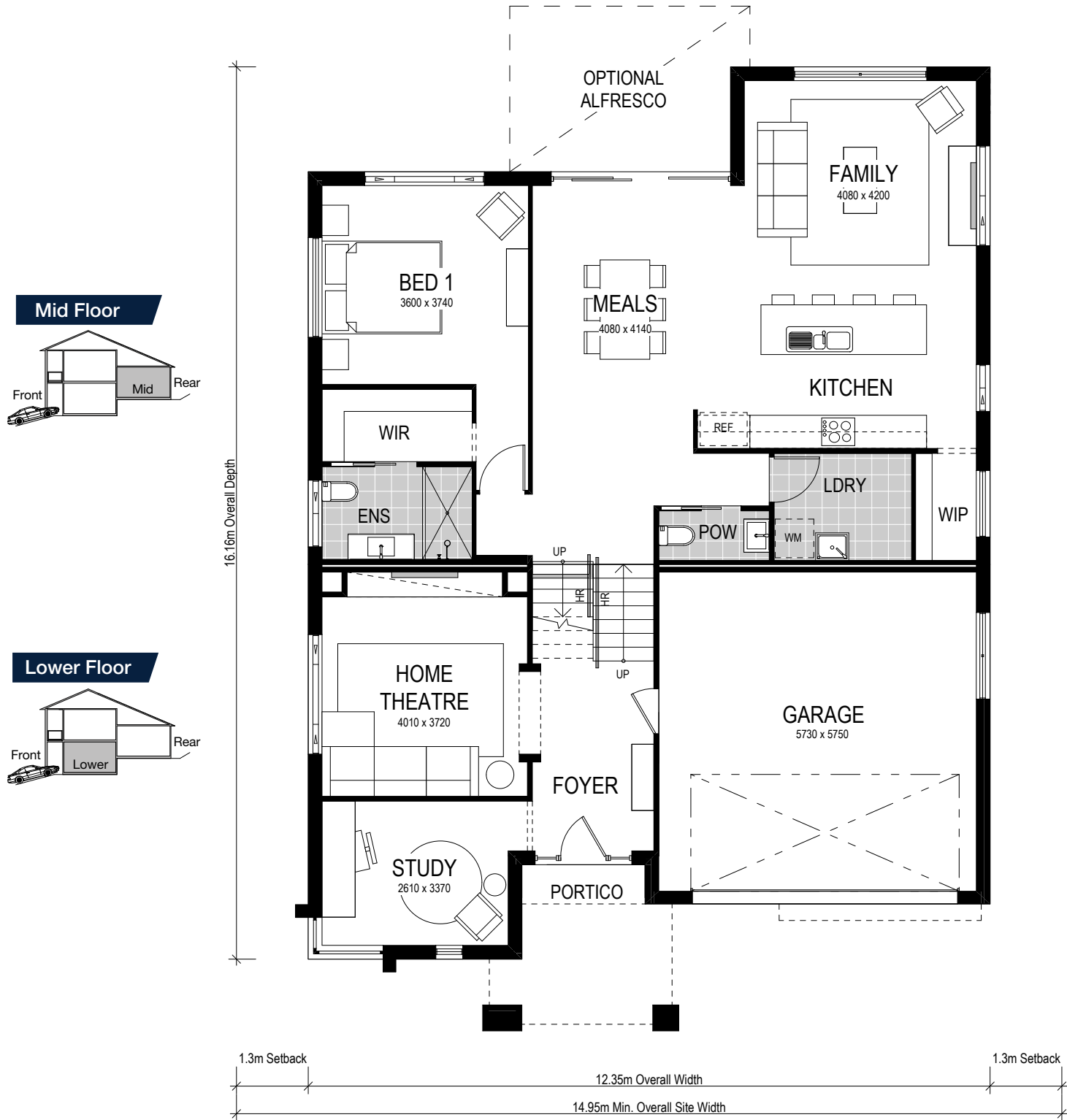
NEWCASTLE 02 4945 4000
SYDNEY 02 8883 5400
CENTRAL COAST 02 4384 1441



Riviera 1 262

 4 Beds
  2.5 Baths
  2 Parks

Note: Artists impressions and pictures shown in this brochure may not be standard finishes – please refer to standard inclusions list for details.



This house is on display at:
HomeWorld Warnervale
 18 Scarlett Street
 Hamlyn Terrace

4 Beds

2.5 Baths

2 Parks

The Riviera design is one of our stand-out split level designs and is the perfect home to complement an uphill sloping site. Inside the home, a stunning entry awaits. With elegance and space surrounding you, you'll find the kitchen and primary living rooms on the mid floor. This central family area flows through to your optional alfresco; perfect for year round entertaining.

The design also features a separate home theatre, rumpus and living areas, and four sizeable bedrooms. The upper floor provides a casual retreat for the kids, which also opens to an enchanting covered deck to overlook your potential views.

Consider a stunning open riser staircase to achieve a grand entry with higher ceilings.

Note: Executive facade plan shown. Scale: 1:100

Facade options & features

Facade	Roof type	Total m ²	Total squares
Metro	Tiles	261.04 m ²	28.1 squares
Executive	Colorbond	262.24 m ²	28.2 squares

Important - please read - copyright ©

All brochures, sketches & plans, whether conceptual or architectural, that we have developed on your behalf remain the property of Montgomery Homes under copyright law & we retain & claim all rights to these plans. Despite popular belief, changing our plans by 50% or more does not avoid legal responsibility for a copyright breach.