

Facade options and features



Manhattan Facade

Roof Type
Colorbond

Total m²/Sq
244.18/26.3



Grande Facade

Roof Type
Tiles

Total m²/Sq
245.09/26.4



Hamptons Facade

Roof Type
Tiles

Total m²/Sq
244.36/26.3



Executive Facade

Roof Type
Tiles

Total m²/Sq
244.61/26.3



Cosmo Facade

Roof Type
Tiles

Total m²/Sq
243.89/26.3



Metro Facade

Roof Type
Tiles

Total m²/Sq
240.92/25.9



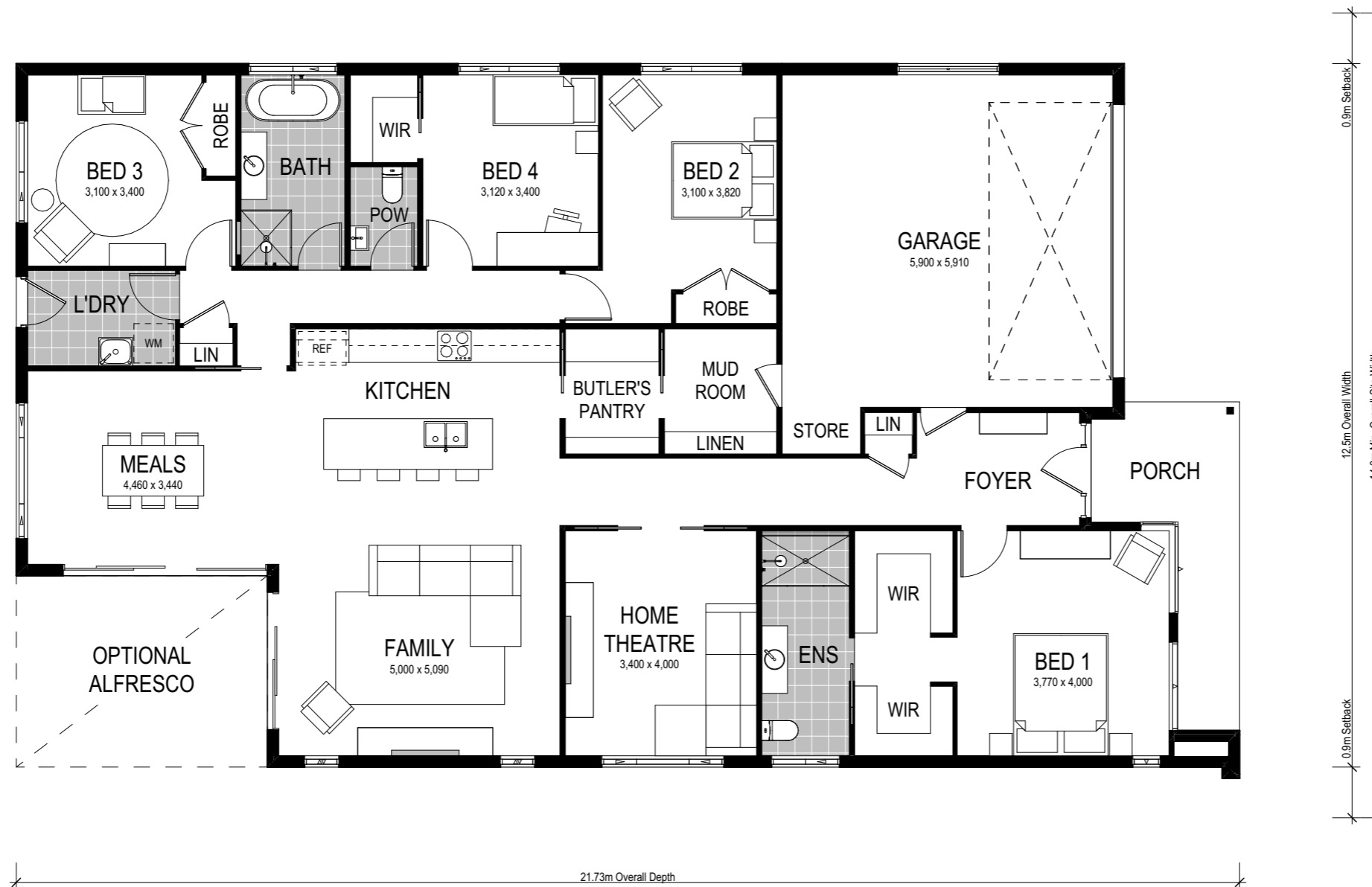
Note: Artist's impressions and pictures shown in this brochure may not be standard finishes – please refer to standard inclusions list for details. Images may depict homes from other design ranges and are used for illustrative purposes only.



Important - please read - copyright ©
All brochures, sketches & plans, whether conceptual or architectural, that we have developed on your behalf remain the property of Montgomery Homes under copyright law & we retain & claim all rights to these plans. Despite popular belief, changing our plans by 50% or more does not avoid legal responsibility for a copyright breach.

Avoca 245





Scale: 1:100. Floor plan depicts Manhattan facade.

Avoca 245

-  4 Bed
-  2 Bath
-  2 Park

The Avoca 245 is a single storey design perfectly suited for level sites with a 14.4m frontage or wider. The design features two living areas, including a separate home theatre room, and four bedrooms.

A highlight of this home is the modern and functional mud room to help keep dirt and mess at the door. The mud room provides ingress from the garage to the contemporary Butlers pantry — a convenient access point for arriving home with groceries, school bags and shoes.

This home comes with many great features:

- ✓ Variety of open plan living areas
- ✓ Flexibility to adapt the floor plan
- ✓ Easy to expand to alfresco area
- ✓ Smart storage options
- ✓ Multiple facade options
- ✓ Mud room
- ✓ Butler's pantry
- ✓ Home theatre

An Avoca 210 is on display at:

 **Huntlee**
7 Peachy Avenue
North Rothbury