

# Facade options and features



**Grande Facade**

Roof Type Tiles Total m<sup>2</sup>/Sq 249.48/26.9



**Hamptons Facade**

Roof Type Tiles Total m<sup>2</sup>/Sq 248.80/26.8



**Executive Facade**

Roof Type Tiles Total m<sup>2</sup>/Sq 248.24/26.7



**Cosmo Facade**

Roof Type Tiles Total m<sup>2</sup>/Sq 248.06/26.7



**Metro Facade**

Roof Type Tiles Total m<sup>2</sup>/Sq 244.98/26.4

Note: Artist's impressions and pictures shown in this brochure may not be standard finishes – please refer to standard inclusions list for details. Images may depict homes from other design ranges and are used for illustrative purposes only.



Important - please read - copyright ©

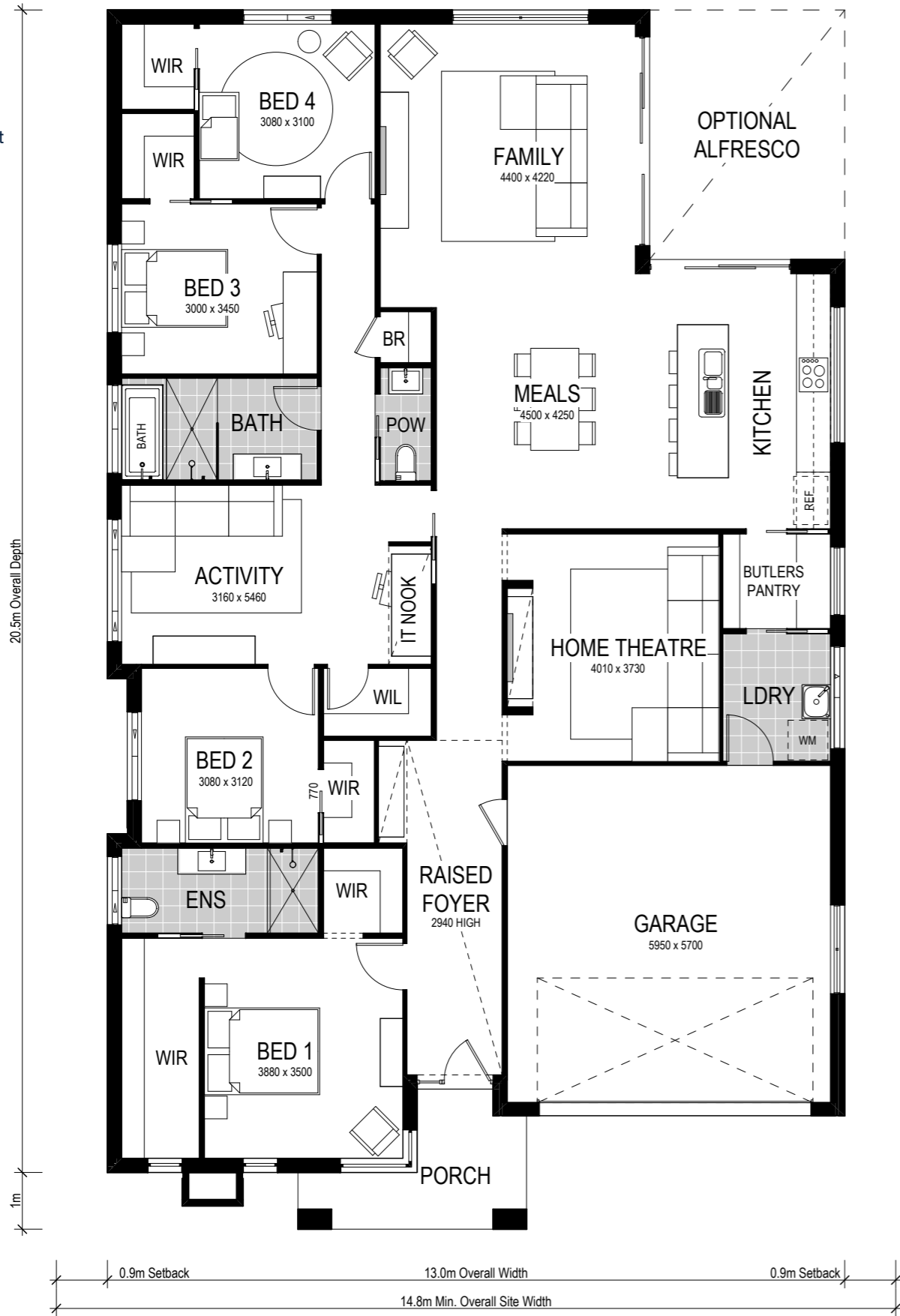
All brochures, sketches & plans, whether conceptual or architectural, that we have developed on your behalf remain the property of Montgomery Homes under copyright law & we retain & claim all rights to these plans. Despite popular belief, changing our plans by 50% or more does not avoid legal responsibility for a copyright breach.



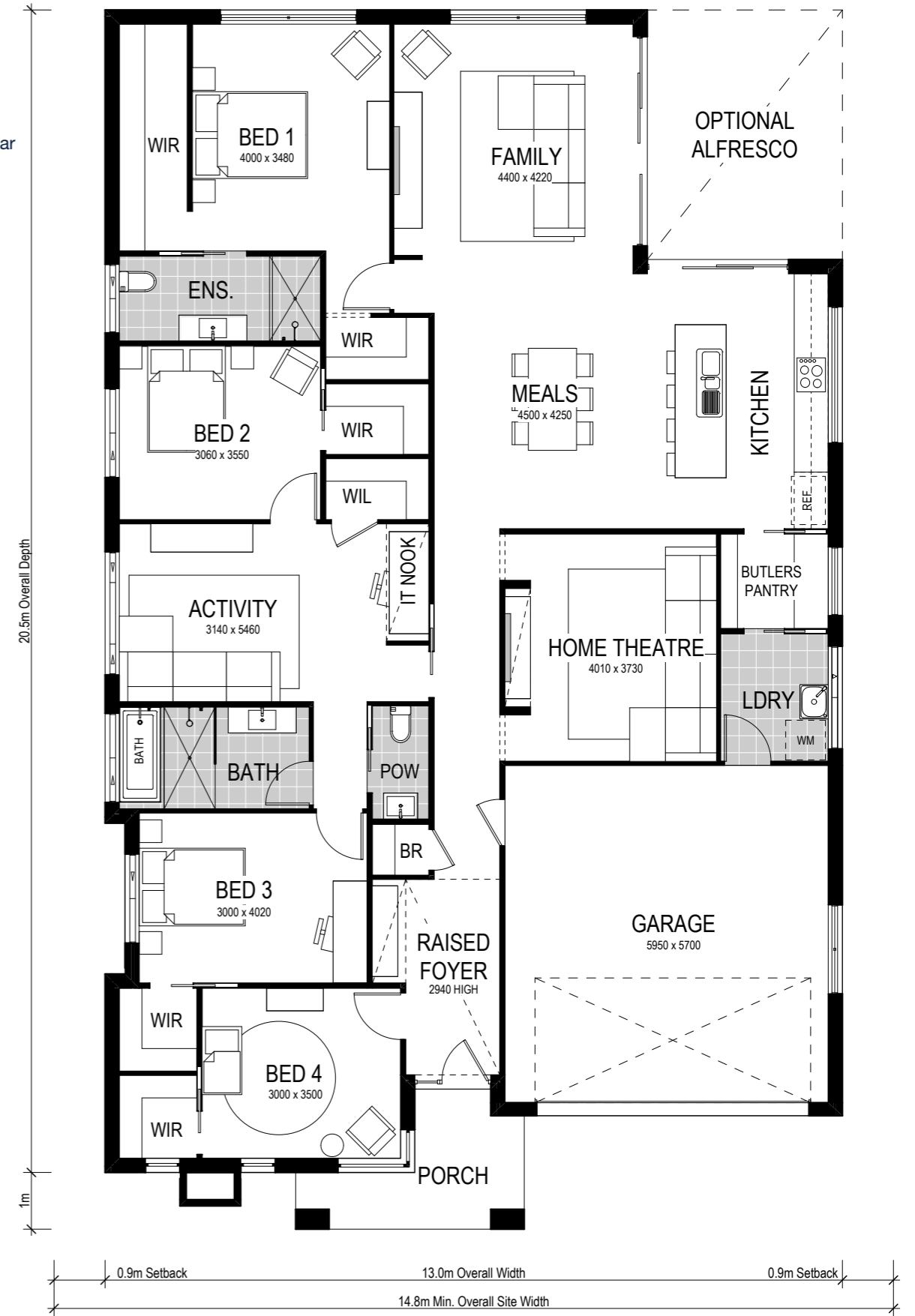
# Avalon 249



**Avalon 1**  
Bedroom 1 to the front



**Avalon 2**  
Bedroom 1 to the rear



Scale: 1:100. Floor plan depicts Grande facade.

# Avalon 249

-  4 Bed
-  2 Bath
-  2 Park

The Avalon 249 is a single storey design perfectly suited for level sites with a 14.8m frontage or wider. The design features three living areas, including a separate home theatre room, and four sizeable bedrooms. A highlight of this home is the contemporary Butler's pantry and laundry that provides ingress from the garage to the kitchen. Consider Avalon 1 or Avalon 2 layout which places the main bedroom at the front or the rear of the home.

This home comes with many great features:

- ✓ Variety of open plan living areas
- ✓ Flexibility to adapt the floor plan
- ✓ Easy to unfold onto alfresco area
- ✓ Smart storage options
- ✓ Multiple facade options
- ✓ Butler's pantry
- ✓ Walk-in robe in every bedroom
- ✓ IT/study nook
- ✓ Home theatre

An Avalon 1 242 is on display at:

-  **Warnervale**  
18 Scarlett Street,  
Hamlyn Terrace
-  **Billy's Lookout Estate**  
47 Pitt Street,  
Teralba, Lake Macquarie